

# **FULLFIP2**

## **User Reference Manual**

**ALS 50262 g-en**

First issue: 03-1994  
This edition: 10-2006

# *Meaning of terms that may be used in this document / Notice to readers*

---

## **WARNING**

**Warning notices are used to emphasize that hazardous voltages, currents, temperatures, or other conditions that could cause personal injury exist or may be associated with use of a particular equipment.**

**In situations where inattention could cause either personal injury or damage to equipment, a Warning notice is used.**

## **Caution**

**Caution notices are used where there is a risk of damage to equipment for example.**

## **Note**

Notes merely call attention to information that is especially significant to understanding and operating the equipment.

This document is based on information available at the time of its publication. While efforts have been made to be accurate, the information contained herein does not purport to cover all details or variations in hardware or software, nor to provide for every possible contingency in connection with installation, operation, or maintenance. Features may be described herein which are not present in all systems. ALSTOM assumes no obligation of notice to holders of this document with respect to changes subsequently made.

ALSTOM makes no representation or warranty, expressed, implied, or statutory with respect to, and assumes no responsibility for the accuracy, completeness, sufficiency, or usefulness of the information contained herein. ALSTOM gives no warranties of merchantability or fitness for purpose shall apply.

In this publication, no mention is made of rights with respect to trademarks or tradenames that may attach to certain words or signs. The absence of such mention, however, in no way implies there is no protection.

Partial reproduction of this document is authorized, but limited to internal use, for information only and for no commercial purpose.

However, such authorization is granted only on the express condition that any partial copy of the document bears a mention of its property, including the copyright statement.

All rights reserved.

© Copyright 2003. ALSTOM (Paris, France)

| <b>Index letter</b> | <b>Date</b> | <b>Nature of revision</b>   |
|---------------------|-------------|---|
| a                   | 03-1993     | 1st issue approved  |
| b                   | 06-1996     | Revision  |
| c                   | 02-2000     | ALSTOM branding of manual   |
| d                   | 08-2000     | Chapter 4 Electrical characteristics,<br>Network bit rate 5 Mbits/s                                 |
| e                   | 12-2002     | Modifications in Chapter 6  |
| f                   | 10-2003     | Modifications in the<br>. pinout diagrams,<br>. electrical characteristics<br>. physical dimensions |
| g                   | 10-2006     | Addition of the “lead-free” component specifications<br>and some corrections                        |



## 1. PURPOSE OF MANUAL AND DOCUMENTED VERSION

This manual describes the FULLFIP2 component. The FULLFIP2 communication coprocessor implements most of the link and application protocols of the WorldFIP fieldbus.

## 2. CONTENT OF THIS MANUAL

**Chapter 1: Overview** - This chapter provides a presentation of FULLFIP2 and its features.

**Chapter 2: Pin assignments** - Pin assignments and pin description for the FULLFIP2 coprocessor in a PLCC84 or a MQFP100.

**Chapter 3: Functional description** - Description of the Memory Access Controller, the user system interface and the network interface.

**Chapter 4: Electrical characteristics.**

**Chapter 5: Physical dimensions.**

**Chapter 6: Application notes** - Interfacing with the Motorola 6800 microprocessor, the Intel 80C1888 microprocessor, the external private memory and the line transceiver.

**Chapter 7: Board design rules.**

## 3. RELATED PUBLICATIONS

For more information refer to these publications:

|  |                    |
|--|--------------------|
| [1] EN50170 part 3:                                  | WorldFIP Standards |
| [2] FIP Network General Introduction                 | ALS 50249          |
| [3] FIELDRIVE User Reference Manual                  | ALS 50261          |
| [4] FIELDUAL User Reference Manual                   | ALS 50273          |
| [5] FIPCODE Release 6 Software User Reference Manual | ALS 50277          |
| [6] MICROFIP User Reference Manual                   | ALS 50280          |

## 4. WE WELCOME YOUR COMMENTS AND SUGGESTIONS

ALSTOM strives to produce quality technical documentation. Please take the time to fill in and return the "Reader's Comments" page if you have any remarks or suggestions.

# *Preface*

---



## CHAPTER 1 - OVERVIEW

|    |                      |     |
|----|----------------------|-----|
| 1. | GENERAL PRESENTATION | 1-1 |
| 2. | FEATURES             | 1-5 |

## CHAPTER 2 - PIN ASSIGNMENTS

|      |                 |     |
|------|-----------------|-----|
| 1.   | PINOUT DIAGRAMS | 2-1 |
| 1.1. | PLCC84 package  | 2-1 |
| 1.2. | MQFP100 package | 2-2 |
| 2.   | PIN DESCRIPTION | 2-3 |
| 2.1. | PLCC84 package  | 2-3 |
| 2.2. | MQFP100 package | 2-5 |

## CHAPTER 3 - FUNCTIONAL DESCRIPTION

|      |   |      |
|------|---|------|
| 1.   | MEMORY ACCESS CONTROLLER                  | 3-1  |
| 1.1. | General presentation                      | 3-1  |
| 1.2. | Signal description                        | 3-2  |
| 1.3. | Functional model                          | 3-2  |
| 2.   | USER SYSTEM INTERFACE                     | 3-8  |
| 2.1. | General presentation                      | 3-8  |
| 2.2. | Signal description                        | 3-8  |
| 2.3. | Functional model                          | 3-8  |
| 3.   | NETWORK INTERFACE                         | 3-17 |
| 3.1. | General presentation                      | 3-17 |
| 3.2. | Signal description                        | 3-18 |
| 3.3. | Functional model in transmission          | 3-18 |
| 3.4. | Functional model in reception             | 3-23 |
| 3.5. | Network bitrate, clock signals and timers | 3-24 |

## CHAPTER 4 - ELECTRICAL CHARACTERISTICS

## CHAPTER 5 - PHYSICAL DIMENSIONS



# Contents

---

## **CHAPTER 6 - APPLICATION NOTES**

- |    |  |     |
|----|--|-----|
| 1. | INTERFACING WITH THE MOTOROLA 68000 MICROPROCESSOR | 6-1 |
| 2. | INTERFACING WITH THE INTEL 80C188 MICROPROCESSOR   | 6-2 |
| 3. | INTERFACING WITH THE EXTERNAL PRIVATE MEMORY       | 6-4 |
| 4. | INTERFACING WITH THE LINE TRANSCEIVER              | 6-5 |

## **CHAPTER 7 - BOARD DESIGN RULES**

---

|  |      |
|--|------|
| Figure 1.1 - FULLFIP2 Circuit Principle Block Diagram.....                               | 1-3  |
| Figure 1.2 - Block diagram of a network subscriber.....                                  | 1-4  |
| Figure 2.1 - FULLFIP2 pinout diagram - PLCC84 package - Top view.....                    | 2-1  |
| Figure 2.2 - FULLFIP2 pinout diagram - MQFP100 package - Top view.....                   | 2-2  |
| Figure 3.1 - Memory access controller block diagram.....                                 | 3-1  |
| Figure 3.2 - Electrical interface with the memory bus.....                               | 3-2  |
| Figure 3.3 - Read cycle from private memory without wait state - Timing diagram.....     | 3-3  |
| Figure 3.4 - Read cycle from private memory with wait state - Timing diagram.....        | 3-4  |
| Figure 3.5 - Write cycle in private memory without wait state - Timing diagram.....      | 3-5  |
| Figure 3.6 - Write cycle in private memory with wait state - Timing diagram.....         | 3-6  |
| Figure 3.7 - Electrical interface with the user system bus.....                          | 3-8  |
| Figure 3.8 - Functional model of the user system interface.....                          | 3-9  |
| Figure 3.9 - Format of the USTATE register.....  | 3-10 |
| Figure 3.10 - User read transaction.....   | 3-13 |
| Figure 3.11 - User write transaction.....  | 3-14 |
| Figure 3.12 - User read cycle - Timing diagram.....                                      | 3-15 |
| Figure 3.13 - User write cycle - Timing diagram.....                                     | 3-15 |
| Figure 3.14 - Network interface block diagram.....                                       | 3-17 |
| Figure 3.15 - Electrical interface with the line transceiver.....                        | 3-18 |
| Figure 3.16 - Start of frame (AFNOR/UTE delimiters).....                                 | 3-19 |
| Figure 3.17 - End of frame (AFNOR/UTE delimiters).....                                   | 3-20 |
| Figure 3.18 - Start of Frame - Transmission cycle timing diagram.....                    | 3-21 |
| Figure 3.19 - End of Frame - Transmission cycle timing diagram.....                      | 3-22 |
| Figure 3.20 - RXD signal timing diagram.....   | 3-23 |
| Figure 5.1 - PLCC84 package outlines.....  | 5-1  |
| Figure 5.1 - PLCC84 package outlines (continued).....                                    | 5-2  |
| Figure 5.2 - PLCC84 package outlines - Terminal details.....                             | 5-3  |
| Figure 5.3 - MQFP100 package outlines.....   | 5-5  |
| Figure 5.3 - MQFP100 package outlines (continued).....                                   | 5-6  |
| Figure 5.4 - MQFP100 package outlines - Terminal details.....                            | 5-6  |
| Figure 6.1 - FULLFIP2 interface with a 68000.....  | 6-1  |
| Figure 6.2 - FULLFIP2 interface with a 80C188.....                                       | 6-2  |
| Figure 6.3 - PAL P22V10 component pinout.....  | 6-3  |
| Figure 6.4 - External private memory interface.....                                      | 6-4  |
| Figure 6.5 - Implementation of a fieldbus connection in single medium configuration..... | 6-6  |

# Tables

---

|  |      |
|--|------|
| Table 1.1 - Profiles implemented in FULLFIP2 .....                                 | 1-2  |
| Table 2.1 - FULLFIP2 pin description - PLCC84 package .....                        | 2-3  |
| Table 2.2 - FULLFIP2 pin description - MQFP100 package .....                       | 2-5  |
| Table 3.1 - Access time requirements for memory chip .....                         | 3-3  |
| Table 3.2 - Read & write cycle in private memory - Timing values .....             | 3-7  |
| Table 3.3 - Register selector .....  | 3-9  |
| Table 3.4 - Groups of identified commands .....                                    | 3-11 |
| Table 3.5 - User read and write cycle - Timing values .....                        | 3-16 |
| Table 3.6 - Transmission cycle - Timing values .....                               | 3-22 |
| Table 3.7 - Basic clock frequency requirement for a selected network bitrate ..... | 3-24 |
| Table 4.1 - Absolute maximum ratings <sup>(1)</sup> .....                          | 4-1  |
| Table 4.2 - Functional characteristics .....                                       | 4-1  |
| Table 4.3 - Consumption <sup>(2)</sup> .....                                       | 4-1  |
| Table 5.1 - PLCC84 package dimensions .....  | 5-4  |
| Table 5.2 - MQFP100 package dimensions .....                                       | 5-7  |
| Table 7.1 - Value of the external pulling resistors - PLCC84 package .....         | 7-2  |
| Table 7.2 - Value of the external pulling resistors - MQFP100 package .....        | 7-3  |

# Chapter 1

## Overview

---

---

### 1. GENERAL PRESENTATION

The FULLFIP2 component is a communication coprocessor implementing most of the link and application protocols of the WorldFIP fieldbus. It was manufactured in 0.5  $\mu\text{m}$  C-Mos AMIS technology. The circuit contains more than 160,000 transistors.

The FULLFIP2 chip is the second generation of the FULLFIP integrated circuit; it enhances communication performances by integrating the possibility to operate at the physical layer in conformance with the IEC standard and by increasing the network transmission rate.

This circuit is intended to equip any field device having a certain intelligence level such as PLC, I/O mux, Drive, Console etc. capable of managing a great number of variables, including intelligent sensors and actuators.

It implements a set of periodic and aperiodic buffer transfer and messaging services of the data link layer, as well as for a station supporting the arbitrator function as for a slave station. It also supports the MPS application layer services including promptness, refreshment, and synchronization mechanisms. It can process up to 4096 identifiers among the 65536 possible on the network.

For this purpose it must have a private memory which can reach a size of 2 MB. The objects handled by the circuit which constitutes the local data base are stored in this memory address space.

The circuit is microprogrammed. A part of the microprogram is located in an internal ROM while the remaining part is loaded into the internal RAM from the external private memory.

It is interfaced through a bus of type '8-bit peripheral device' with the 'user' processor in charge of running the application software.

The user requests and the network events may be totally asynchronous as any database access conflict is solved by internal algorithms.

On the network side, FULLFIP2 is connected to the WorldFIP bus by a line driver which can be doubled to ensure medium redundancy. The circuit implements a FIP standardized full-duplex UART whose transmission rate is selectable among the following values: 31.25 Kbit/s, 1 Mbit/s, 2.5 Mbit/s and 5 Mbit/s.

The transmit and receive signals on the network interface are encoded data sequence (Manchester Biphase L).

The FULLFIP2 component implements several profiles of the MAU-MDS function (Medium Attachement Unit) that the different standards have in common.

| STANDARD | IEC 61158-2                         | CENELEC EN50170<br>AFNOR/UTE NFC46-604                       |
|----------|-------------------------------------|--|
| PROFILES | 31.25 Kbit/s<br>Wire / Voltage mode | CH-S1 profile  |
|          | 1 Mbit/s<br>Wire / Voltage mode     | CH-S2 profile  |
|          | 2.5 Mbit/s<br>Wire / Voltage mode   | CH-S3 profile  |
|          | 5 Mbit/s<br>Wire / Voltage mode     | will be added in the next version of<br>the 61158-2 standard |

**Table 1.1 - Profiles implemented in FULLFIP2**

The circuit is available in two packages:

- 84-pin plastic leaded chip carrier (PLCC84), pin to pin compatible with the first FULLFIP chip generation,
- 100-pin metric quad flat pack (MQFP100), a more compact plastic package

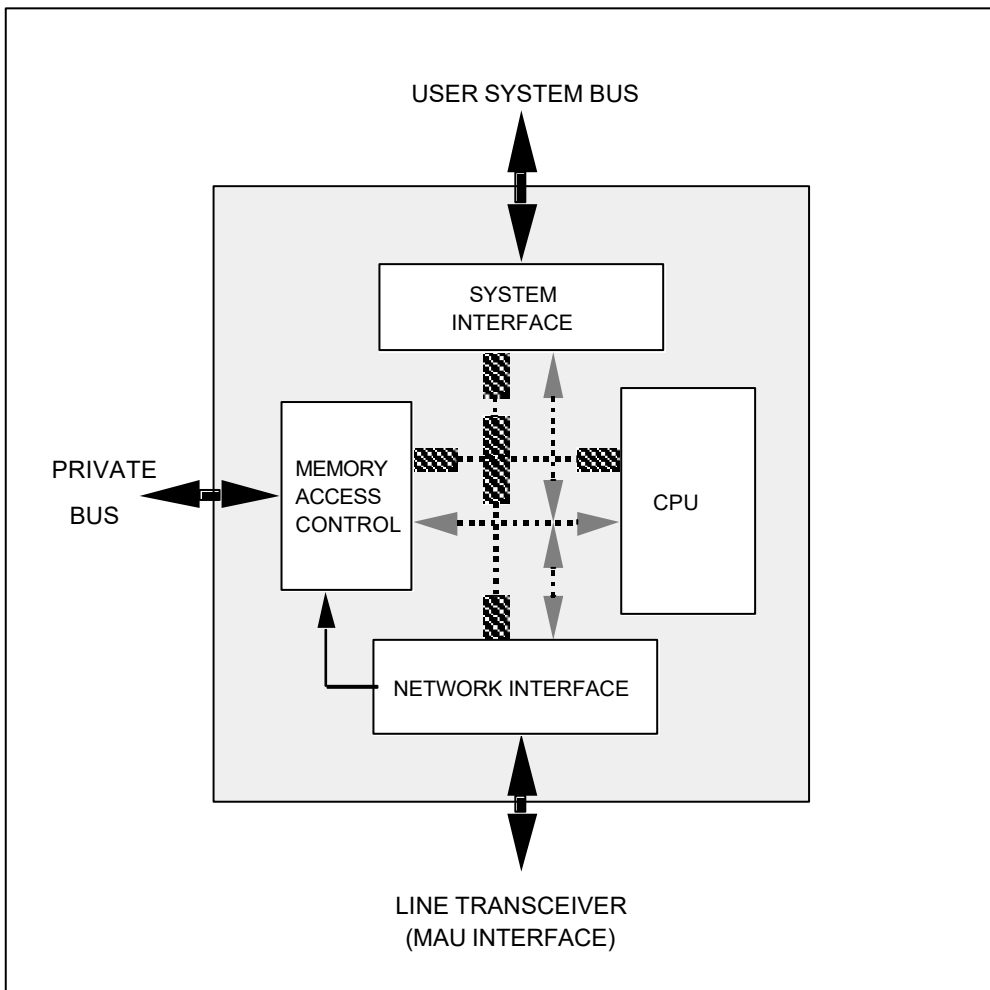
with two lead finishes:

- current components: SnPb
- from November 2006: mat tin plating ( 100% Sn) to be in accordance with the RoHS directives (2002/95/CE), with a peak reflow temperature at 260°C.

These both packages (leaded or lead free) meet the level 3 of the IPC/JEDEC Spec J-STD- 020 (Moisture Induced Stress Sensitivity for Plastic Mount Devices)

This means that the component can be stored in a floor life condition of maximum 30°C/60%RH for one week. Package should be dried if exposed to a non-controlled environment for longer then one week prior to soldering.

The packages can be dried using either storage at 50°C/10% humidity for 96 hours or storage at 125°C for 12 hours.



**Figure 1.1 - FULLFIP2 Circuit Principle Block Diagram**

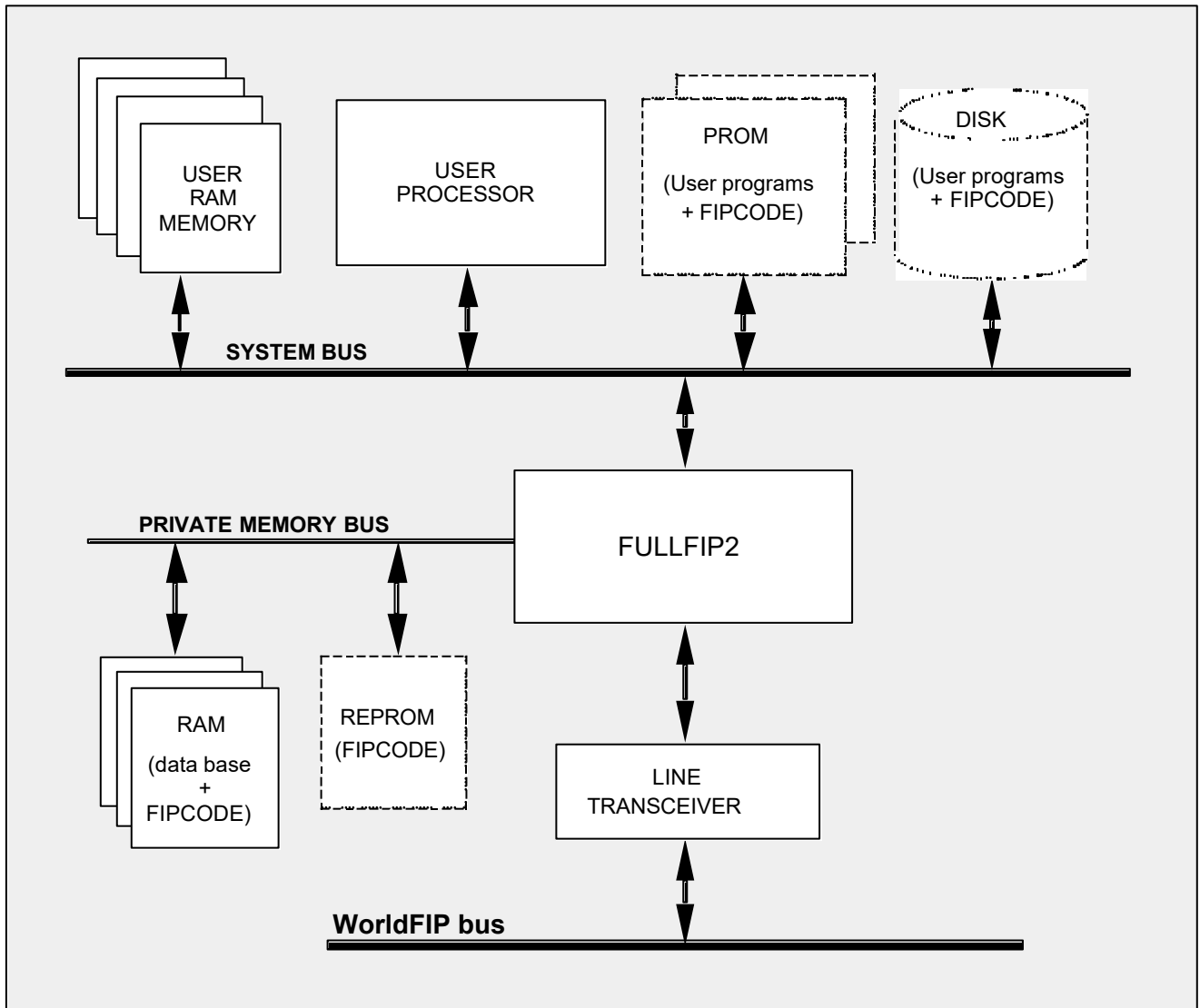


Figure 1.2 - Block diagram of a network subscriber

## 2. FEATURES

- compatible with standards AFNOR UTE NFC 46-601-7; CENELEC EN 50170 and IEC 1158,
- configurable as simple station, as well as, Bus Arbitrator and station,
- handles up to 4096 identifiers,
- bit rate from 31.25 Kbits/s to 5 Mbits/s,
- clock frequency operation up to 80 MHz,
- 8-bit Data Bus User Interface,
- direct interface with the line transceiver,
- private memory up to 2 MB,
- extended temperature range  $-40^{\circ}\text{C} + 85^{\circ}\text{C}$ ,
- available as a 84 PLCC or 100 MQFP.





# Chapter 2

## Pin assignments

### 1. PINOUT DIAGRAMS

#### 1.1. PLCC84 package

- For SnPb lead finish, the reference is : 14280-502
- For Sn lead finish, RoHs compliant component, the reference is : 14280-504

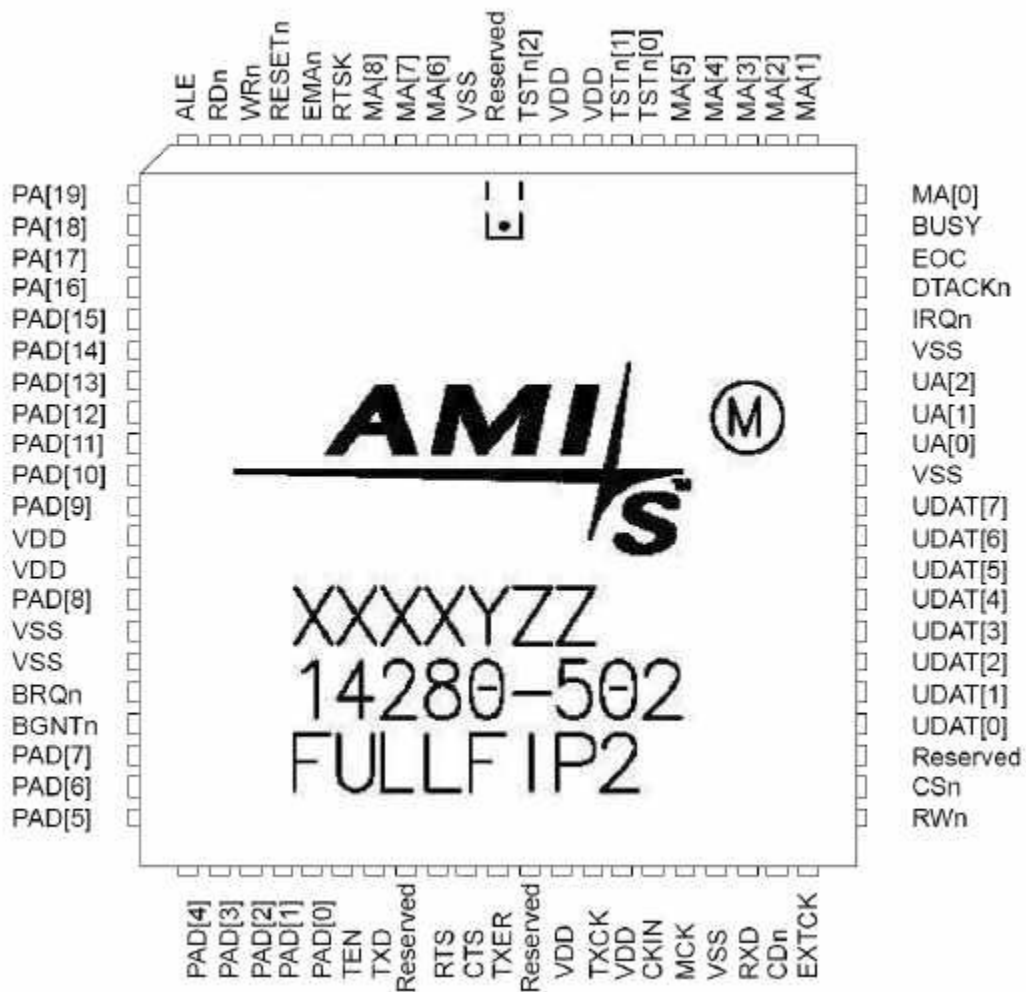


Figure 2.1 - FULLFIP2 pinout diagram - PLCC84 package - Top view

## 1.2. MQFP100 package

- For SnPb lead finish, the reference is : 14280-501
- For Sn lead finish, RoHs compliant component, the reference is : 14280-503

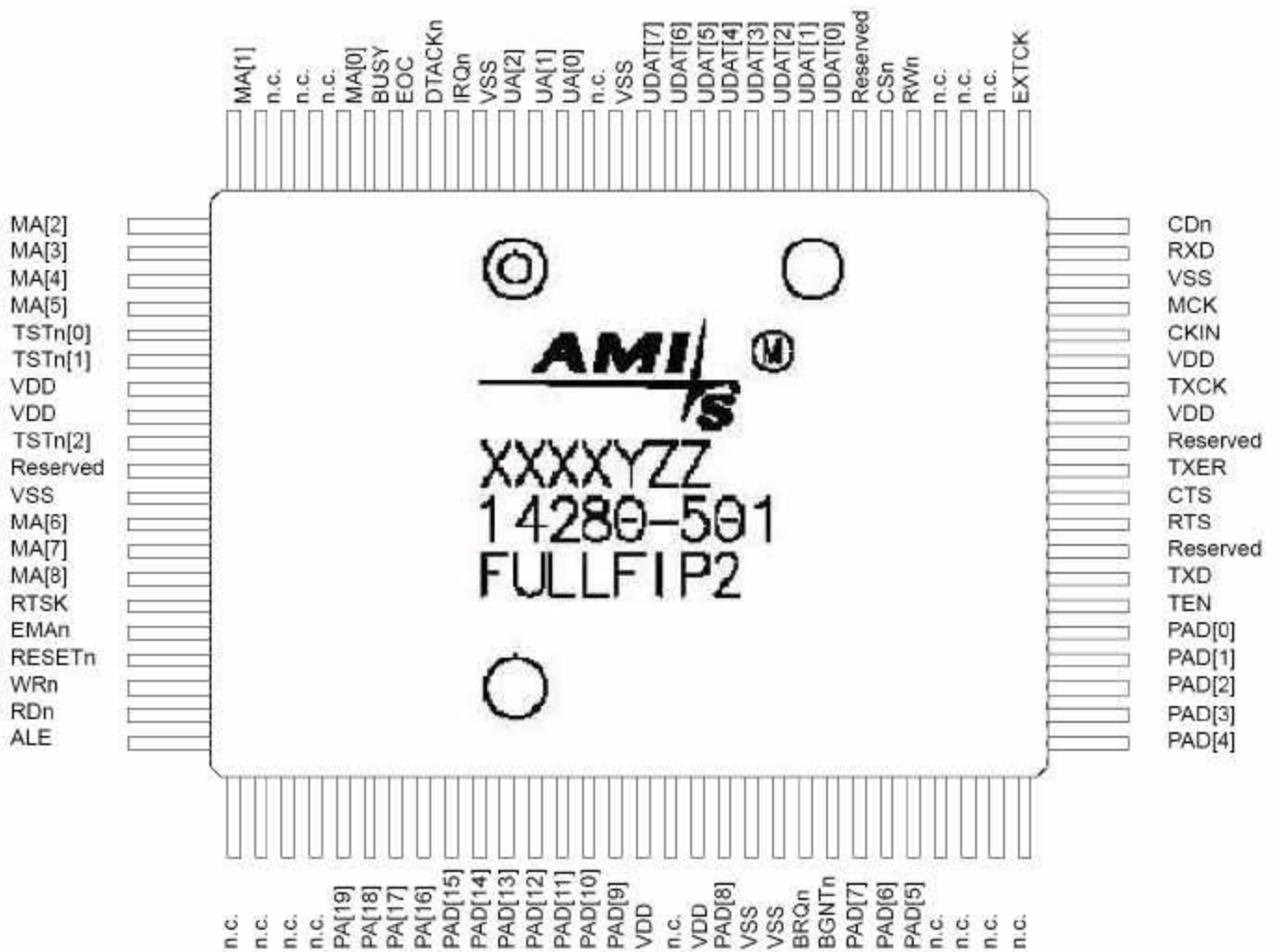


Figure 2.2 - FULLFIP2 pinout diagram - MQFP100 package - Top view

## 2. PIN DESCRIPTION

### 2.1. PLCC84 package

| No. | Pin      | Type          | Io max | Description                                      |
|-----|----------|---------------|--------|--|
| 1   | Reserved | 3-s. output   | 2 mA   | Reserved - (TSTCK in the first generation)       |
| 2   | VSS      | Supply        |        | System ground 0 V - Periphery                    |
| 3   | MA[6]    | 3-s. output   | 2 mA   | MICRO_ADDRESS - Microprogram address             |
| 4   | MA[7]    | 3-s. output   | 2 mA   | MICRO_ADDRESS - Microprogram address             |
| 5   | MA[8]    | 3-s. output   | 2 mA   | MICRO_ADDRESS - Microprogram address             |
| 6   | RTSK     | 3-s. output   | 2 mA   | RUNNING TASK                                     |
| 7   | EMAn     | Pullup input  |        | ENABLE MICRO_ADDRESS - MA bus validation         |
| 8   | RESETh   | Trigger input |        | RESET - Circuit initialization                   |
| 9   | WRn      | Output        | 4 mA   | WRITE STROBE - Writing signal for private memory |
| 10  | RDn      | Output        | 4 mA   | READ STROBE - Reading signal for private memory  |
| 11  | ALE      | Output        | 4 mA   | ADDRESS LATCH ENABLE - Address validation        |
| 12  | PA[19]   | 3-s. output   | 4 mA   | PRIVATE ADDRESS - Private bus address            |
| 13  | PA[18]   | 3-s. output   | 4 mA   | PRIVATE ADDRESS - Private bus address            |
| 14  | PA[17]   | 3-s. output   | 4 mA   | PRIVATE ADDRESS - Private bus address            |
| 15  | PA[16]   | 3-s. output   | 4 mA   | PRIVATE ADDRESS - Private bus address            |
| 16  | PAD[15]  | I/O           | 4 mA   | PRIVATE ADDRESS/DATA - Multiplexed Address/Data  |
| 17  | PAD[14]  | I/O           | 4 mA   | PRIVATE ADDRESS/DATA - Multiplexed Address/Data  |
| 18  | PAD[13]  | I/O           | 4 mA   | PRIVATE ADDRESS/DATA - Multiplexed Address/Data  |
| 19  | PAD[12]  | I/O           | 4 mA   | PRIVATE ADDRESS/DATA - Multiplexed Address/Data  |
| 20  | PAD[11]  | I/O           | 4 mA   | PRIVATE ADDRESS/DATA - Multiplexed Address/Data  |
| 21  | PAD[10]  | I/O           | 4 mA   | PRIVATE ADDRESS/DATA - Multiplexed Address/Data  |
| 22  | PAD[9]   | I/O           | 4 mA   | PRIVATE ADDRESS/DATA - Multiplexed Address/Data  |
| 23  | VDD      | Supply        |        | Supply voltage +5 V - Core                       |
| 24  | VDD      | Supply        |        | Supply voltage +5 V - Periphery                  |
| 25  | PAD[8]   | I/O           | 4 mA   | PRIVATE ADDRESS/DATA - Multiplexed Address/Data  |
| 26  | VSS      | Supply        |        | System ground 0 V - Periphery                    |
| 27  | VSS      | Supply        |        | System ground 0 V - Core                         |
| 28  | BRQn     | Output        | 2 mA   | BUS REQUEST - Bus access request                 |
| 29  | BGNTn    | Input         |        | BUS GRANT - Bus access grant                     |
| 30  | PAD[7]   | I/O           | 4 mA   | PRIVATE ADDRESS/DATA - Multiplexed Address/Data  |
| 31  | PAD[6]   | I/O           | 4 mA   | PRIVATE ADDRESS/DATA - Multiplexed Address/Data  |
| 32  | PAD[5]   | I/O           | 4 mA   | PRIVATE ADDRESS/DATA - Multiplexed Address/Data  |
| 33  | PAD[4]   | I/O           | 4 mA   | PRIVATE ADDRESS/DATA - Multiplexed Address/Data  |
| 34  | PAD[3]   | I/O           | 4 mA   | PRIVATE ADDRESS/DATA - Multiplexed Address/Data  |
| 35  | PAD[2]   | I/O           | 4 mA   | PRIVATE ADDRESS/DATA - Multiplexed Address/Data  |
| 36  | PAD[1]   | I/O           | 4 mA   | PRIVATE ADDRESS/DATA - Multiplexed Address/Data  |
| 37  | PAD[0]   | I/O           | 4 mA   | PRIVATE ADDRESS/DATA - Multiplexed Address/Data  |
| 38  | TEN      | Output        | 2 mA   | TRANSMIT ENABLE - Transmitter validation         |
| 39  | TXD      | Output        | 2 mA   | SERIAL DATA OUT                                  |
| 40  | Reserved | Output        | 2 mA   | Reserved (TEN2 in the first generation)          |
| 41  | RTS      | Output        | 2 mA   | REQUEST TO SEND                                  |
| 42  | CTS      | Input         |        | CLEAR TO SEND                                    |
| 43  | TXER     | Input         |        | TRANSMIT ERROR - Error on transmitter            |

**Table 2.1 - FULLFIP2 pin description - PLCC84 package**

| No. | Pin      | Type           | Io max | Description   |
|-----|----------|----------------|--------|---|
| 44  | Reserved | Input          |        | Reserved (TXER2 in the first generation)            |
| 45  | VDD      | Supply         |        | Supply voltage +5 V - Core                          |
| 46  | TXCK     | I/O            | 2 mA   | TRANSMIT CLOCK                                      |
| 47  | VDD      | Supply         |        | Supply voltage +5 V - Periphery                     |
| 48  | CKIN     | Input          |        | CLOCK INPUT - Basic clock                           |
| 49  | MCK      | Output         | 2 mA   | MASTER CLOCK - Main clock output                    |
| 50  | VSS      | Supply         |        | System ground 0 V - Periphery                       |
| 51  | RXD      | Input          |        | SERIAL DATA IN                                      |
| 52  | CDn      | Input          |        | CARRIER DETECT                                      |
| 53  | EXTCK    | Pulldown input |        | EXTERNAL TEST CLOCK - External test clock selection |
| 54  | RWn      | Input          |        | READ/WRITE - Read/write selection on system bus     |
| 55  | CSn      | Input          |        | CHIP SELECT   |
| 56  | Reserved | Input          |        | Reserved - (DSn in the first generation)            |
| 57  | UDAT[0]  | I/O            | 4 mA   | USER DATA - System bus data                         |
| 58  | UDAT[1]  | I/O            | 4 mA   | USER DATA - System bus data                         |
| 59  | UDAT[2]  | I/O            | 4 mA   | USER DATA - System bus data                         |
| 60  | UDAT[3]  | I/O            | 4 mA   | USER DATA - System bus data                         |
| 61  | UDAT[4]  | I/O            | 4 mA   | USER DATA - System bus data                         |
| 62  | UDAT[5]  | I/O            | 4 mA   | USER DATA - System bus data                         |
| 63  | UDAT[6]  | I/O            | 4 mA   | USER DATA - System bus data                         |
| 64  | UDAT[7]  | I/O            | 4 mA   | USER DATA - System bus data                         |
| 65  | VSS      | Supply         |        | System ground 0 V - Core                            |
| 66  | UA[0]    | Input          |        | USER ADDRESS - System bus address                   |
| 67  | UA[1]    | Input          |        | USER ADDRESS - System bus address                   |
| 68  | UA[2]    | Input          |        | USER ADDRESS - System bus address                   |
| 69  | VSS      | Supply         |        | System ground 0 V - Core                            |
| 70  | IRQn     | Output         | 2 mA   | INTERRUPT REQUEST                                   |
| 71  | DTACKn   | 3-s. output    | 2 mA   | DATA ACKNOWLEDGE - Access acknowledge               |
| 72  | EOC      | Output         | 2 mA   | END OF CYCLE - End of Bus Arbitrator cycle          |
| 73  | BUSY     | Output         | 4 mA   | CHIP BUSY - Working transaction                     |
| 74  | MA[0]    | 3-s. output    | 4 mA   | MICRO_ADDRESS - Microprogram address                |
| 75  | MA[1]    | 3-s. output    | 4 mA   | MICRO_ADDRESS - Microprogram address                |
| 76  | MA[2]    | 3-s. output    | 4 mA   | MICRO_ADDRESS - Microprogram address                |
| 77  | MA[3]    | 3-s. output    | 4 mA   | MICRO_ADDRESS - Microprogram address                |
| 78  | MA[4]    | 3-s. output    | 4 mA   | MICRO_ADDRESS - Microprogram address                |
| 79  | MA[5]    | 3-s. output    | 4 mA   | MICRO_ADDRESS - Microprogram address                |
| 80  | TSTn[0]  | Pullup input   |        | TEST INPUT - Test mode control                      |
| 81  | TSTn[1]  | Pullup input   |        | TEST INPUT - Test mode control                      |
| 82  | VDD      | Supply         |        | Supply voltage +5 V - Periphery                     |
| 83  | VDD      | Supply         |        | Supply voltage +5 V - Core                          |
| 84  | TSTn[2]  | Pullup input   |        | TEST INPUT - Test mode control                      |

Note 1: FULLFIP2 is designed using CMOS technology ; all input signals are TTL compatible and all output signals are CMOS compatible.

Note 2: RESETn is a Schmitt-Trigger input. Initialization of the FULLFIP2 component is performed by keeping RESETn to the low level during 32T (T = 1/CKIN ).

Note 3: Internal pullups are implemented on inputs in order to avoid floating input signals but they do not fix a definite input level. It will be then necessary to add external pullup/down elements.

Note 4: The pins PA[19:16] become tri-stated whenever BGNTn is high.

Note 5: All pins of type 'output', except MCK, become tri-stated whenever TSTn[1] is low.

**Table 2.1 - FULLFIP2 pin description - PLCC84 package (continued)**

## 2.2. MQFP100 package

| No. | Pin      | Type        | Io max | Description                                     |
|-----|----------|-------------|--------|---|
| 1   | n.c.     | Input       |        | Unused  |
| 2   | n.c.     | Input       |        | Unused  |
| 3   | n.c.     | Input       |        | Unused  |
| 4   | n.c.     | Input       |        | Unused  |
| 5   | PA[19]   | 3-s. output | 4 mA   | PRIVATE ADDRESS - Private bus address           |
| 6   | PA[18]   | 3-s. output | 4 mA   | PRIVATE ADDRESS - Private bus address           |
| 7   | PA[17]   | 3-s. output | 4 mA   | PRIVATE ADDRESS - Private bus address           |
| 8   | PA[16]   | 3-s. output | 4 mA   | PRIVATE ADDRESS - Private bus address           |
| 9   | PAD[15]  | I/O         | 4 mA   | PRIVATE ADDRESS/DATA - Multiplexed Address/Data |
| 10  | PAD[14]  | I/O         | 4 mA   | PRIVATE ADDRESS/DATA - Multiplexed Address/Data |
| 11  | PAD[13]  | I/O         | 4 mA   | PRIVATE ADDRESS/DATA - Multiplexed Address/Data |
| 12  | PAD[12]  | I/O         | 4 mA   | PRIVATE ADDRESS/DATA - Multiplexed Address/Data |
| 13  | PAD[11]  | I/O         | 4 mA   | PRIVATE ADDRESS/DATA - Multiplexed Address/Data |
| 14  | PAD[10]  | I/O         | 4 mA   | PRIVATE ADDRESS/DATA - Multiplexed Address/Data |
| 15  | PAD[9]   | I/O         | 4 mA   | PRIVATE ADDRESS/DATA - Multiplexed Address/Data |
| 16  | VDD      | Supply      |        | Supply voltage +5 V - Core                      |
| 17  | n.c.     | Input       |        | Unused  |
| 18  | VDD      | Supply      |        | Supply voltage +5 V - Periphery                 |
| 19  | PAD[8]   | I/O         | 4 mA   | PRIVATE ADDRESS/DATA - Multiplexed Address/Data |
| 20  | VSS      | Supply      |        | System ground 0 V - Periphery                   |
| 21  | VSS      | Supply      |        | System ground 0 V - Core                        |
| 22  | BRQn     | Output      | 2 mA   | BUS REQUEST - Bus access request                |
| 23  | BGNTn    | Input       |        | BUS GRANT - Bus access grant                    |
| 24  | PAD[7]   | I/O         | 4 mA   | PRIVATE ADDRESS/DATA - Multiplexed Address/Data |
| 25  | PAD[6]   | I/O         | 4 mA   | PRIVATE ADDRESS/DATA - Multiplexed Address/Data |
| 26  | PAD[5]   | I/O         | 4 mA   | PRIVATE ADDRESS/DATA - Multiplexed Address/Data |
| 27  | n.c.     | Input       |        | Unused  |
| 28  | n.c.     | Input       |        | Unused  |
| 29  | n.c.     | Input       |        | Unused  |
| 30  | n.c.     | Input       |        | Unused  |
| 31  | PAD[4]   | I/O         | 4 mA   | PRIVATE ADDRESS/DATA - Multiplexed Address/Data |
| 32  | PAD[3]   | I/O         | 4 mA   | PRIVATE ADDRESS/DATA - Multiplexed Address/Data |
| 33  | PAD[2]   | I/O         | 4 mA   | PRIVATE ADDRESS/DATA - Multiplexed Address/Data |
| 34  | PAD[1]   | I/O         | 4 mA   | PRIVATE ADDRESS/DATA - Multiplexed Address/Data |
| 35  | PAD[0]   | I/O         | 4 mA   | PRIVATE ADDRESS/DATA - Multiplexed Address/Data |
| 36  | TEN      | Output      | 2 mA   | TRANSMIT ENABLE - Transmitter validation        |
| 37  | TXD      | Output      | 2 mA   | SERIAL DATA OUT                                 |
| 38  | Reserved | Output      | 2 mA   | Reserved (TEN2 in the first generation)         |
| 39  | RTS      | Output      | 2 mA   | REQUEST TO SEND                                 |
| 40  | CTS      | Input       |        | CLEAR TO SEND                                   |
| 41  | TXER     | Input       |        | TRANSMIT ERROR - Error on transmitter           |
| 42  | Reserved | Input       |        | Reserved (TXER2 in the first generation)        |
| 43  | VDD      | Supply      |        | Supply voltage +5 V - Core                      |
| 44  | TXCK     | I/O         | 2 mA   | TRANSMIT CLOCK                                  |
| 45  | VDD      | Supply      |        | Supply voltage +5 V - Periphery                 |
| 46  | CKIN     | Input       |        | CLOCK INPUT - Basic clock                       |

Table 2.2 - FULLFIP2 pin description - MQFP100 package

| No. | Pin      | Type           | Io max | Description   |
|-----|----------|----------------|--------|---|
| 47  | MCK      | Output         | 2 mA   | MASTER CLOCK - Main clock output                    |
| 48  | VSS      | Supply         |        | System ground 0 V - Periphery                       |
| 49  | RXD      | Input          |        | SERIAL DATA IN                                      |
| 50  | CDn      | Input          |        | CARRIER DETECT                                      |
| 51  | EXTCK    | Pulldown input |        | EXTERNAL TEST CLOCK - External test clock selection |
| 52  | n.c.     | Input          |        | Unused  |
| 53  | n.c.     | Input          |        | Unused  |
| 54  | n.c.     | Input          |        | Unused  |
| 55  | RWn      | Input          |        | READ/WRITE - Read/Write selection on system bus     |
| 56  | CSn      | Input          |        | CHIP SELECT   |
| 57  | Reserved | Input          |        | Reserved - (DSn in the first generation)            |
| 58  | UDAT[0]  | I/O            | 4 mA   | USER DATA - System bus data                         |
| 59  | UDAT[1]  | I/O            | 4 mA   | USER DATA - System bus data                         |
| 60  | UDAT[2]  | I/O            | 4 mA   | USER DATA - System bus data                         |
| 61  | UDAT[3]  | I/O            | 4 mA   | USER DATA - System bus data                         |
| 62  | UDAT[4]  | I/O            | 4 mA   | USER DATA - System bus data                         |
| 63  | UDAT[5]  | I/O            | 4 mA   | USER DATA - System bus data                         |
| 64  | UDAT[6]  | I/O            | 4 mA   | USER DATA - System bus data                         |
| 65  | UDAT[7]  | I/O            | 4 mA   | USER DATA - System bus data                         |
| 66  | VSS      | Supply         |        | System ground 0 V - Core                            |
| 67  | n.c.     | Input          |        | Unused  |
| 68  | UA[0]    | Input          |        | USER ADDRESS - System bus address                   |
| 69  | UA[1]    | Input          |        | USER ADDRESS - System bus address                   |
| 70  | UA[2]    | Input          |        | USER ADDRESS - System bus address                   |
| 71  | VSS      | Supply         |        | System ground 0 V - Core                            |
| 72  | IRQn     | Output         | 2 mA   | INTERRUPT REQUEST                                   |
| 73  | DTACKn   | 3-s. output    | 2 mA   | DATA ACKNOWLEDGE - Access acknowledge               |
| 74  | EOC      | Output         | 2 mA   | END OF CYCLE - End of Bus Arbitrator cycle          |
| 75  | BUSY     | Output         | 4 mA   | CHIP BUSY - Working transaction                     |
| 76  | MA[0]    | 3-s. output    | 4 mA   | MICRO_ADDRESS - Microprogram address                |
| 77  | n.c.     | Input          |        | Unused  |
| 78  | n.c.     | Input          |        | Unused  |
| 79  | n.c.     | Input          |        | Unused  |
| 80  | MA[1]    | 3-s. output    | 4 mA   | MICRO_ADDRESS - Microprogram address                |
| 81  | MA[2]    | 3-s. output    | 4 mA   | MICRO_ADDRESS - Microprogram address                |
| 82  | MA[3]    | 3-s. output    | 4 mA   | MICRO_ADDRESS - Microprogram address                |
| 83  | MA[4]    | 3-s. output    | 4 mA   | MICRO_ADDRESS - Microprogram address                |
| 84  | MA[5]    | 3-s. output    | 4 mA   | MICRO_ADDRESS - Microprogram address                |
| 85  | TSTn[0]  | Pullup input   |        | TEST INPUT - Test mode control                      |
| 86  | TSTn[1]  | Pullup input   |        | TEST INPUT - Test mode control                      |
| 87  | VDD      | Supply         |        | Supply voltage +5 V - Periphery                     |
| 88  | VDD      | Supply         |        | Supply voltage +5 V - Core                          |
| 89  | TSTn[2]  | Pullup input   |        | TEST INPUT - Test mode control                      |
| 90  | Reserved | 3-s. output    | 2 mA   | Reserved - (TSTCK in the first generation)          |
| 91  | VSS      | Supply         |        | System ground 0 V - Periphery                       |
| 92  | MA[6]    | 3-s. output    | 2 mA   | MICRO_ADDRESS - Microprogram address                |
| 93  | MA[7]    | 3-s. output    | 2 mA   | MICRO_ADDRESS - Microprogram address                |

Table 2.2 - FULLFIP2 pin description - MQFP100 package (continued)

| No. | Pin    | Type          | Io max | Description                                      |
|-----|--------|---------------|--------|--|
| 94  | MA[8]  | 3-s. output   | 2 mA   | MICRO_ADDRESS - Microprogram address             |
| 95  | RTSK   | 3-s. output   | 2 mA   | RUNNING TASK                                     |
| 96  | EMAn   | Pullup input  |        | ENABLE MICRO_ADDRESS - MA bus validation         |
| 97  | RESETn | Trigger input |        | RESET - Circuit initialization                   |
| 98  | WRn    | Output        | 4 mA   | WRITE STROBE - Writing signal for private memory |
| 99  | RDn    | Output        | 4 mA   | READ STROBE - Reading signal for private memory  |
| 100 | ALE    | Output        | 4 mA   | ADDRESS LATCH ENABLE - Address validation        |

Note 1: FULLFIP2 is designed using CMOS technology ; all input signals are TTL compatible and all output signals are CMOS compatible.

Note 2: RESETn is a Schmitt-Trigger input. Initialization of the FULLFIP2 component is performed by keeping RESETn to the low level during 32T (T = 1/CKIN ).

Note 3: Internal pullups are implemented on inputs in order to avoid floating input signals but they do not fix a definite input level. It will be then necessary to add external pullup/down elements.

Note 4: The pins PA[19:16] become tri-stated whenever BGNTn is high.

Note 5: All pins of type 'output', except MCK, become tri-stated whenever TSTn[1] is low.

**Table 2.2 - FULLFIP2 pin description - MQFP100 package (continued)**





## 1. MEMORY ACCESS CONTROLLER

### 1.1. General presentation

The memory access controller is the interface between the core of the FULLFIP2 circuit and the external private memory. It handles three access channels: the A and B channels are under the control of the central unit, the C channel is reserved for the identifier search device of the network manager.

Figure 5 shows the block diagram of the external private memory access controller.

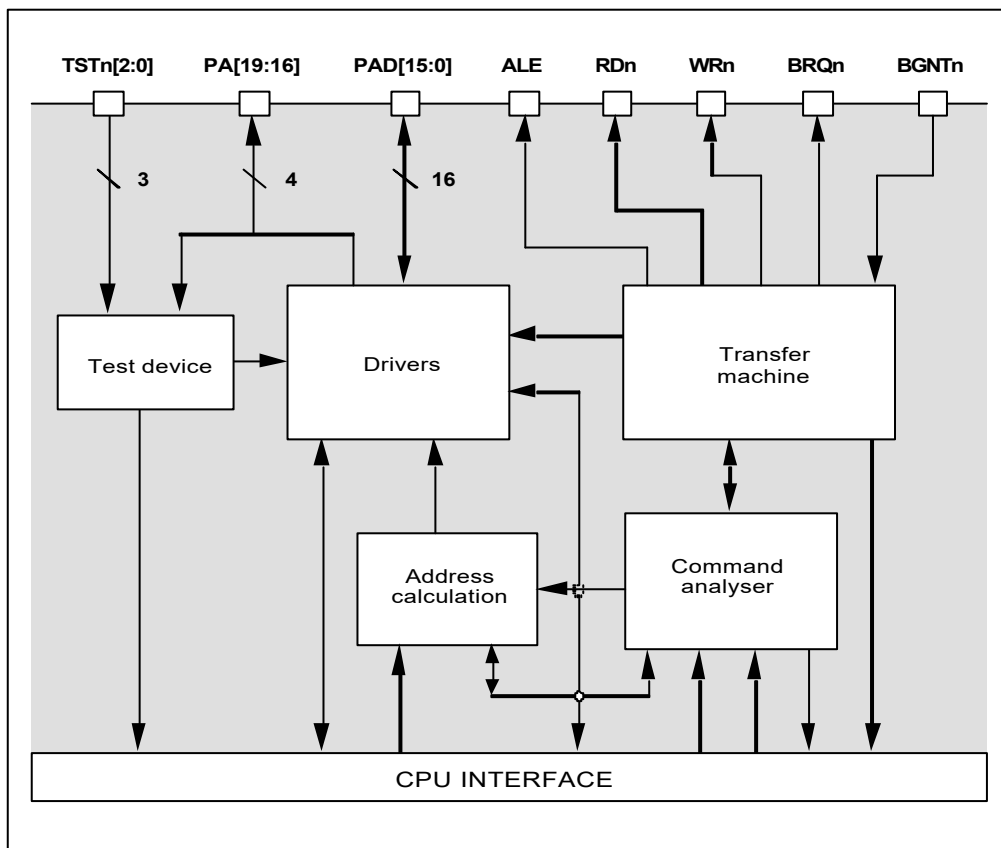


Figure 3.1 - Memory access controller block diagram

## 1.2. Signal description

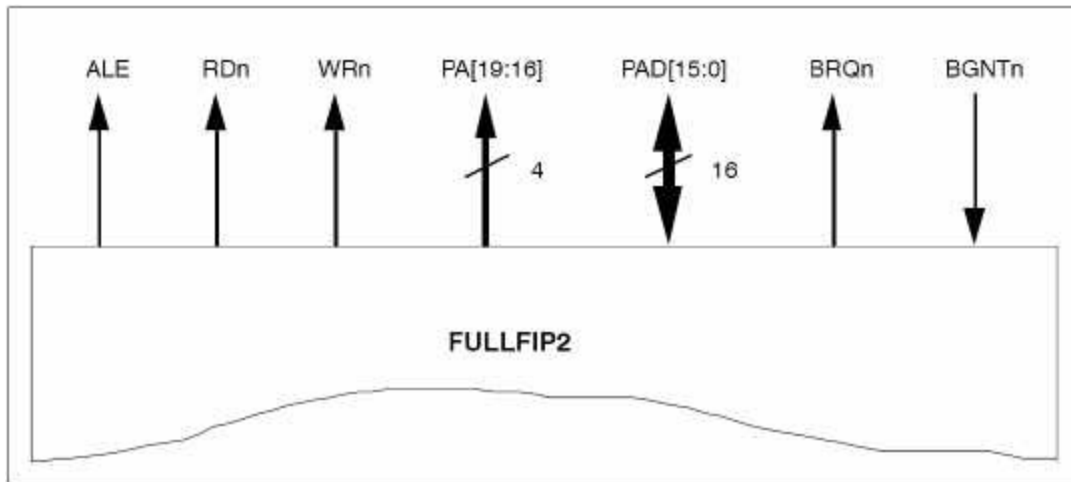


Figure 3.2 - Electrical interface with the memory bus

## 1.3. Functional model

The external private memory may be sized between 32 Kword and 1 Mword of 16-bit words (external private memory address bus width sized to 20 bits).

The external private memory is used to store :

- **the FULLFIP2 microcode (FIPCODE),**
- **the data base management structures,**
- **the data base contents.**

The external private memory may be composed of RAM memory chip only, but in some implementations, the microcode may be kept permanently in a REPROM memory chip and the remaining information located in RAM memory.

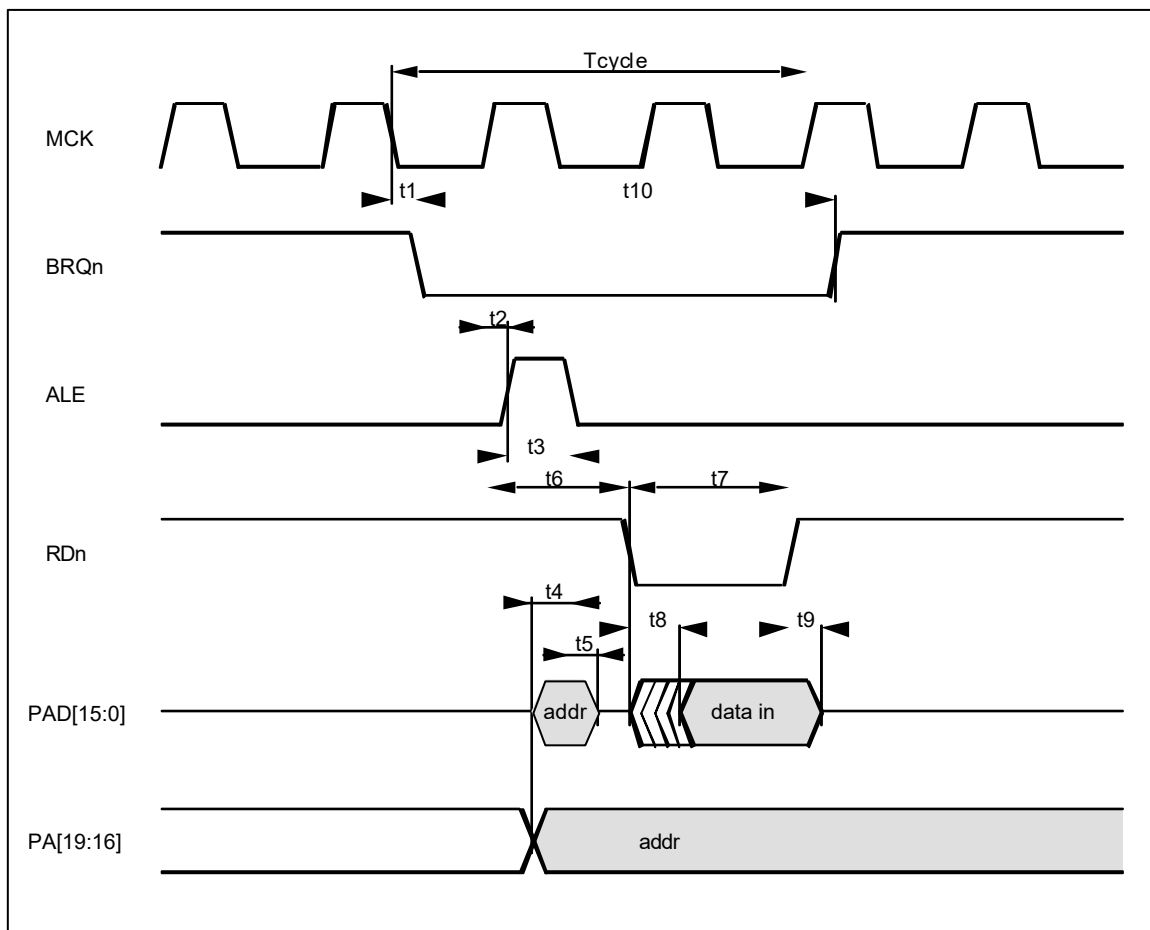
In any case, it is recommended to design the RAM private memory with static RAM chips without wait state for which microcode operating is guaranteed.

Table 3.1 lists the time access requirements for static RAM or REPROM memory chips.

| Basic clock frequency (CKIN input) | Maximum access time for memory chips (static RAM or REPROM) |
|------------------------------------|---|
| 40 MHz                             | 120 ns  |
| 64 MHz                             | 70 ns   |
| 80 MHz                             | 55 ns   |

**Table 3.1 - Access time requirements for memory chip**

These read/write operations are performed with or without wait state as shown in the Figure 3.3, Figure 3.4, Figure 3.5 and Figure 3.6.



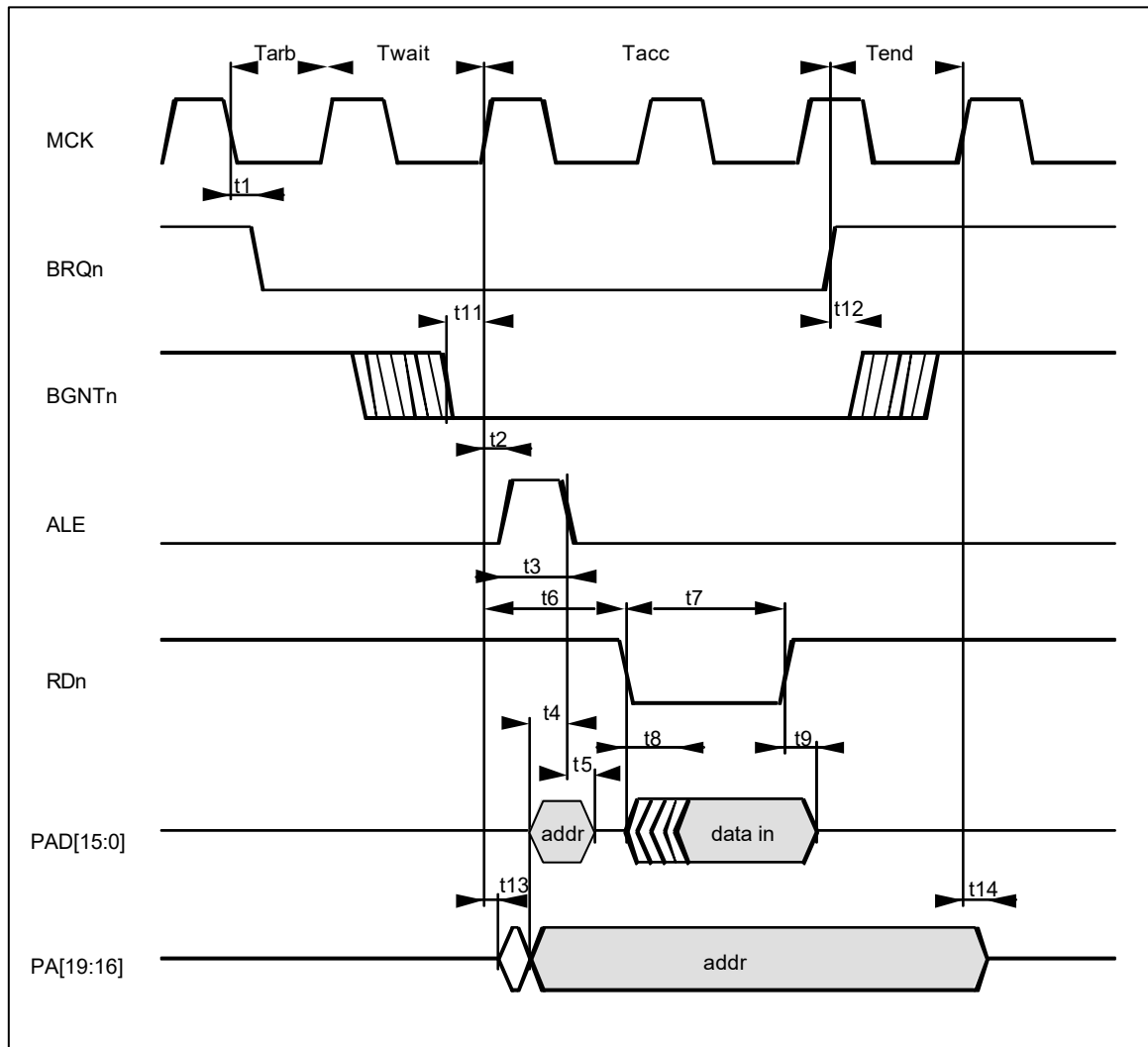
**Figure 3.3 - Read cycle from private memory without wait state - Timing diagram**

Note 1: BGNTn is permanently low.

Note 2: The MCK period is equal to 5T, the low state to 3T and the high state to 2T.

Note 3: Duration of a read cycle is :  $T_{cycle} = 13T$

Note 4: T = 25 ns @ CKIN = 40 MHz  
 15.625 ns @ CKIN = 64 MHz  
 12.5 ns @ CKIN = 80 MHz



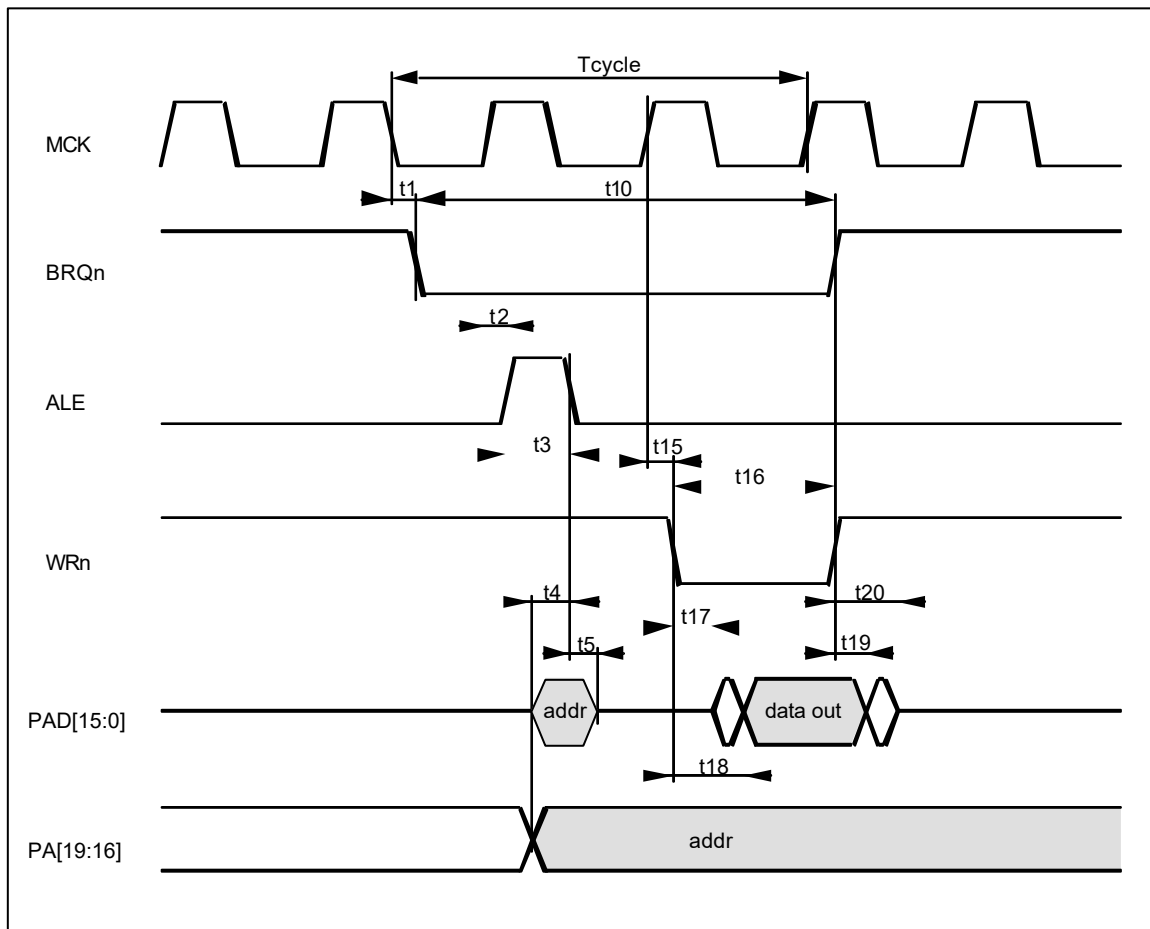
Note 1: The MCK period is equal to 5T, the low state to 3T and the high state to 2T.

Note 2: Duration of a read cycle is :  
 $T_{cycle} = T_{arb} + n \times T_{wait} + T_{acc} + T_{end}$   
 where  $n$  is the number of wait states  
 $T_{arb} = 3T$   
 $T_{wait} = 5T$   
 $T_{acc} = 11T$   
 $T_{end} = 4T$

In other words,  $T_{cycle} = 18T + n \times 5T$

Note 3:  $T =$  25 ns @ CKIN = 40 MHz  
 15.625 ns @ CKIN = 64 MHz  
 12.5 ns @ CKIN = 80 MHz

**Figure 3.4 - Read cycle from private memory with wait state- Timing diagram**



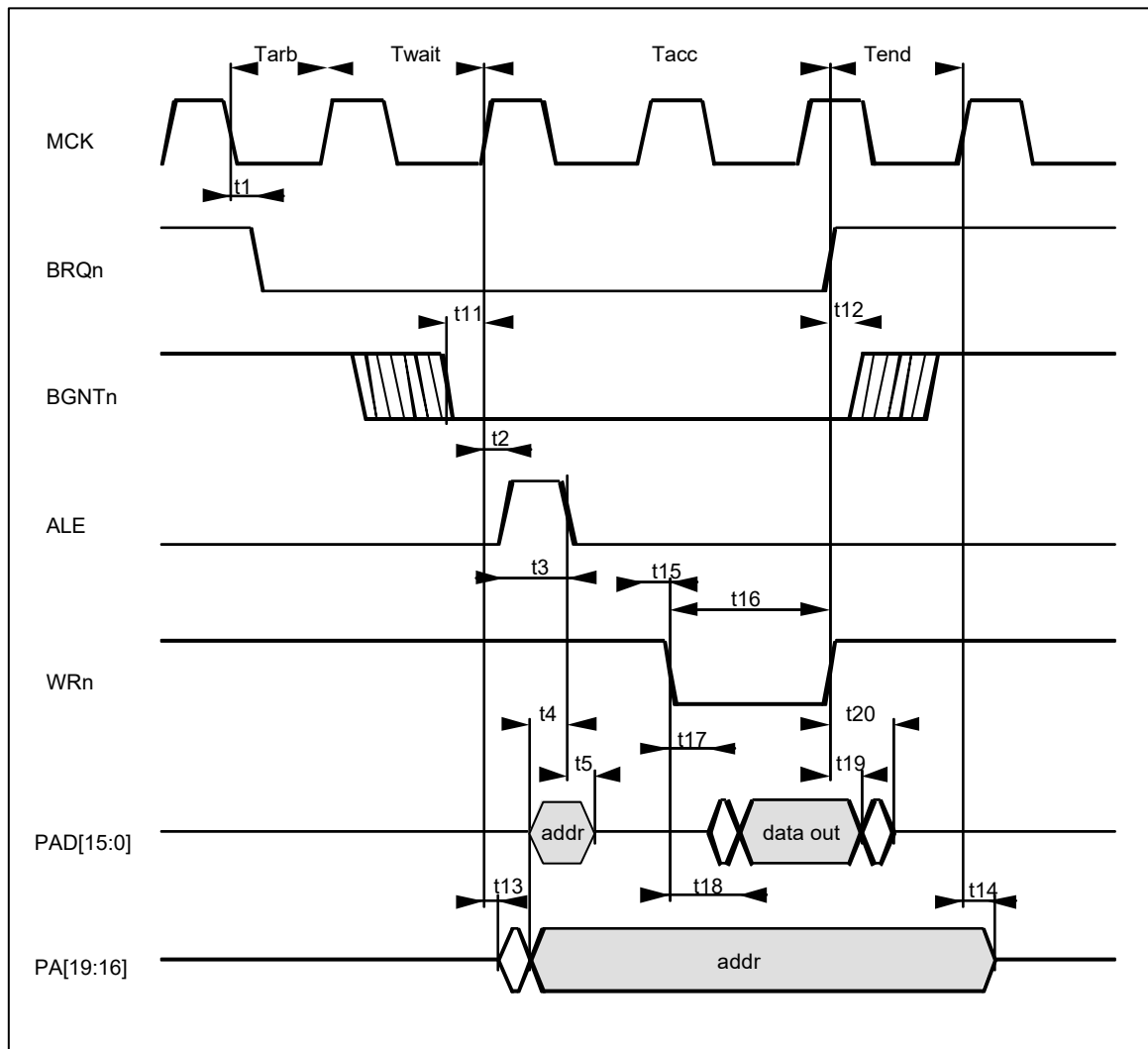
Note 1: BGNTn is permanently low.

Note 2: The MCK period is equal to  $5T$ , the low state to  $3T$  and the high state to  $2T$ .

Note 3: Duration of a write cycle is :  $T_{cycle} = 13T$

Note 4:  $T = 25 \text{ ns}$  @ CKIN = 40 MHz  
 $15.625 \text{ ns}$  @ CKIN = 64 MHz  
 $12.5 \text{ ns}$  @ CKIN = 80 MHz

**Figure 3.5 - Write cycle in private memory without wait state - Timing diagram**



Note 1: The MCK period is equal to  $5T$ , the low state to  $3T$  and the high state to  $2T$ .

Note 2: Duration of a read cycle is :

$$T_{cycle} = T_{arb} + n \times T_{wait} + T_{acc} + T_{end}$$

where  $n$  is the number of wait states

$$T_{arb} = 3T$$

$$T_{wait} = 5T$$

$$T_{acc} = 11T$$

$$T_{end} = 4T$$

In other words,

$$T_{cycle} = 18T + n \times 5T$$

Note 3:  $T = 25 \text{ ns}$  @ CKIN = 40 MHz

$15.625 \text{ ns}$  @ CKIN = 64 MHz

$12.5 \text{ ns}$  @ CKIN = 80 MHz

**Figure 3.6 - Write cycle in private memory with wait state - Timing diagram**

| Symbol | Description                        | Min        | Max        |
|--------|------------------------------------|------------|------------|
| t1     | BRQn active delay                  | - 2 ns     | 15 ns      |
| t2     | ALE active delay                   | - 2 ns     | 8 ns       |
| t3     | ALE pulse width                    | 2T - 5 ns  | 2T + 5 ns  |
| t4     | Address valid to ALE low           | 2T - 10 ns |            |
| t5     | ALE low to Address hold            | 2 ns       |            |
| t6     | Read active delay                  | 3T - 2 ns  | 3T + 8 ns  |
| t7     | Read pulse width                   | 5T - 5ns   | 5T + 5 ns  |
| t8     | Read active to data valid          |            | 3T - 7 ns  |
| t9     | Data hold after read               | 0 ns       |            |
| t10    | Read or write cycle time           | 13T - 5 ns | 13T + 5 ns |
| t11    | BGNTn active setup time            | T + 5 ns   |            |
| t12    | BRQn to BGNTn hold time            | 0 ns       | 2T         |
| t13    | PA[19:16] low Z delay              | - 2 ns     | 5 ns       |
| t14    | PA[19:16] high Z delay             | - 5 ns     | 3 ns       |
| t15    | Write active delay                 | - 2 ns     | 8 ns       |
| t16    | Write pulse width                  | 5T - 5 ns  | 5T + 5 ns  |
| t17    | Write active to PAD[15:0] low Z    | 0 ns       | 12 ns      |
| t18    | Write active to data valid         | 0 ns       | T + 12 ns  |
| t19    | Data hold after write              | 4 ns       |            |
| t20    | Write inactive to PAD[15:0] high Z | T - 5 ns   | T + 5 ns   |

Note 1: T = 25 ns                   @ CKIN = 40 MHz  
15.625 ns                   @ CKIN = 64 MHz  
12.5 ns                   @ CKIN = 80 MHz

Note 2: Output load on PA[19:16], PAD[15:0], ALE, BRQn, WRn, RDn: 30 pF

**Table 3.2 - Read & write cycle in private memory - Timing values**



## 2. USER SYSTEM INTERFACE

### 2.1. General presentation

The data transfer between the circuit and the user processor is handled using an usual asynchronous protocol. The transfer requests are activated by CSn. The circuit sends an acknowledge by DTACKn for transfer completion. The transfers are performed byte after byte.

The circuit is seen by the user processor as a collection of registers which can be selected by the UA[2:0] address bus and the RWn read/write signal.

### 2.2. Signal description

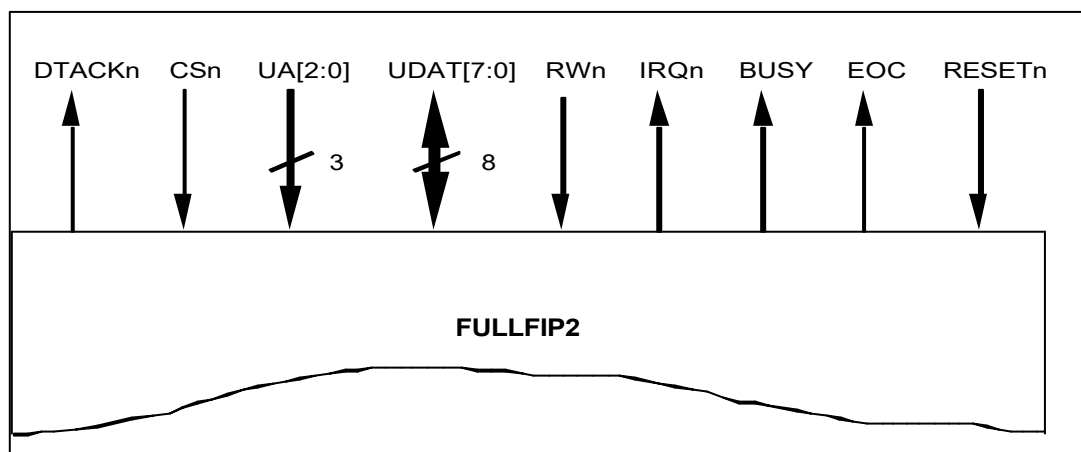
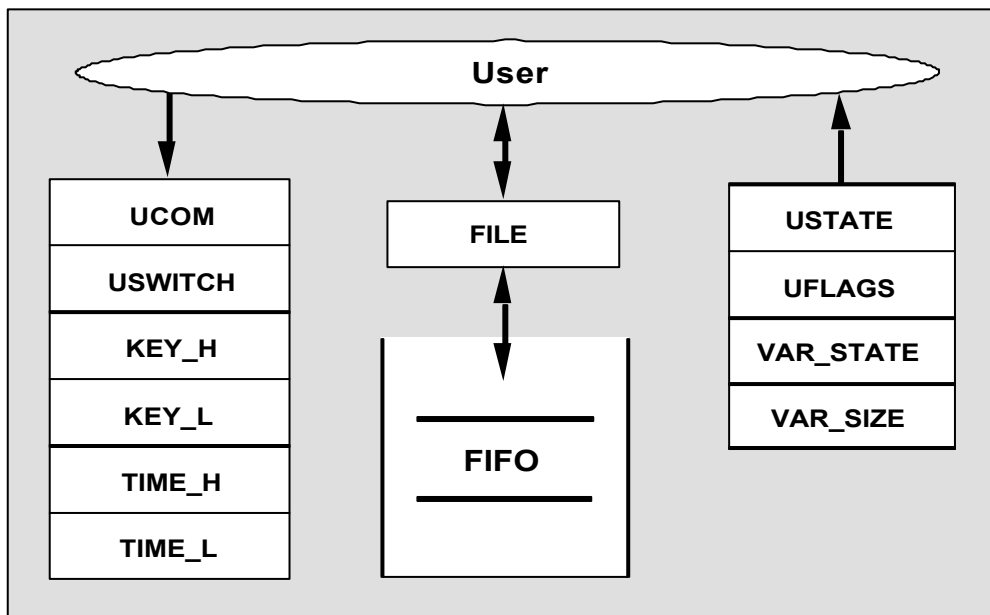


Figure 3.7 - Electrical interface with the user system bus

### 2.3. Functional model

The circuit model as seen by the user may be summarized as a set of 6 write registers, 4 read registers and a 'bidirectional' FIFO capable of being programmed either in read mode or in write mode. At a given time the FIFO is unidirectional.

Presentation of this functional model is given in the Figure 3.8.



**Figure 3.8 - Functional model of the user system interface**

The registers are selected by UA[2:0] as shown in the Table 3.3.

| UA[2:0] | RWn | Status registers | RWn | Command registers |
|---------|-----|------------------|-----|-------------------|
| 0 0 0 b | 1   | USTATE           | 0   | UCOM              |
| 0 0 1 b | 1   | UFLAGS           | 0   | USWITCH           |
| 0 1 0 b | 1   | VAR_STATE        | 0   | KEY_H             |
| 0 1 1 b | 1   | VAR_SIZE_L       | 0   | KEY_L             |
| 1 0 0 b | 1   | VAR_SIZE_H       | 0   | TIME_H            |
| 1 0 1 b | 1   | Unused           | 0   | TIME_L            |
| 1 1 0 b | 1   | Unused           | 0   | Unused            |
| 1 1 1 b | 1   | FILE             | 0   | FILE              |

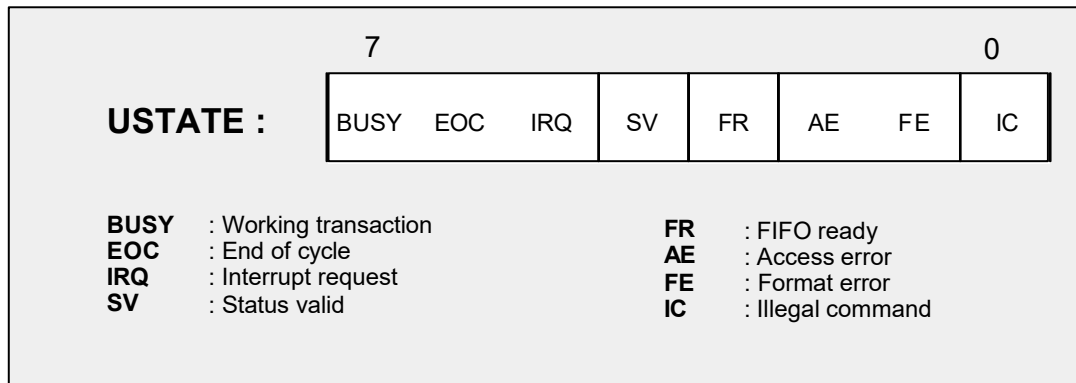
**Table 3.3 - Register selector**

The registers are monodirectional: they are defined either in read mode or in write mode. Some registers are grouped together two by two in order to form 16-bit words, that is the case for the KEY, TIME and VAR\_SIZE registers.

The TIME\_L and TIME\_H registers are used in order to modify the value of the internal real-time counter which permits to synchronize the time managed by the circuit from the user time. The internal time is encoded with 16 bits, the elementary time period is programmable between 0.1 and 5 ms.

The registers of report are grouped into 2 words (USTATE and UFLAGS) which represent the global status of the circuit and the statuses of a variable. This latter one is valid only when a variable has been selected.

The USTATE register groups all the booleans which represent the global status of the interface as, for instance, the BUSY, EOC and IRQn signals.



**Figure 3.9 - Format of the USTATE register**

The UFLAGS register is exclusively updated by the internal program in relation with the objects configured in the external memory of the FULLFIP2.

The VAR\_STATE register groups together the statuses inherent to a transaction on a variable identified or not by the circuit. A transaction can be either a set of reads or a set of writes concerning the same communication variable.

The VAR\_SIZE register contains the configured size of the processed object. It may concern either the exact number of bytes the user must write or the maximum number of bytes he can read or write, depending on the circumstances.

The user may access to a variable only within a transaction. A transaction is composed of three phases that are 'opening', 'access to a variable' and 'closing'.

During the opening phase the FULLFIP2 circuit searches the local data base for the variable and assign a DMA channel between the system interface and the private memory. This channel is used during all the access phase to the variable and is killed when the transaction is closed.

The KEY\_L and KEY\_H registers allow the user to transmit a 16-bit parameter which defines the object concerned by the transaction. This parameter is generally the access key to the variable.

The user controls the different phases of the transaction by means of 8bit orders placed into the UCOM command register. The commands identified by the circuit are divided into 3 groups differentiated by their prefix. The prefix encoded with the 3 most significant bits of the command is the only field to be directly identified by the system interface hardware. The remaining part of the command is interpreted by the FULLFIP2 internal microcode. According to the program some commands may be not identified: in this case an error code is sent back to the user through the VAR\_STATE register.

The system interface monitors the command sequence and prevents the simultaneous opening of several transactions. If an opening command is detected while BUSY is set active then the IC bit of USTATE is set to 1.

**Note**

This error is persistent until the USTATE register is read.

| UCOM[7:5]                                | Group         | Description                   |
|--|---------------|-------------------------------|
| 0 0 0 b                                  | CLOSE         | Closing a transaction         |
| 0 0 1 b<br>0 1 0 b<br>0 1 1 b            | READ COMMAND  | Opening a reading transaction |
| 1 0 0 b<br>1 0 1 b<br>1 1 0 b<br>1 1 1 b | WRITE COMMAND | Opening a writing transaction |

**Table 3.4 - Groups of identified commands**

The circuit can process up to 96 read type commands and up to 128 write type commands.

The circuit controls the user access to certain registers in order to preserve the data integrity. That can concern the VAR\_STATE and VAR\_SIZE registers and the FIFO.

The user can read VAR\_STATE and VAR\_SIZE only within a transaction and only when the SV bit of USTATE is set active. The content of the registers is not significant if these conditions are not met.

The circuit controls the accesses to these registers as follows :

- **Outside a transaction**

The BUSY and SV bits of USTATE are zero and an access to VAR\_STATE and VAR\_SIZE causes an error indicated by the AE bit of USTATE.

|             |
|-------------|
| <b>Note</b> |
|-------------|

This error is persistent until the USTATE register is read.

Although there is an error, the content of the selected register is available to the user at the maximum speed of the interface.

- **At the opening of a transaction**

The BUSY bit is set active but SV is not yet active. In this case, the accesses to VAR\_STATE and VAR\_SIZE are delayed until the activation of SV. The DTACKn signal is activated only after the register validation. CSn can be deactivated only after DTACKn activation.

- **During a transaction**

The BUSY and SV bits are set active and the access is performed at the maximum speed of the interface.

Concerning the FIFO, the user can access to it through the FILE register only within a transaction and only when the FR bit of USTATE is set active. Moreover the accesses to a variable are limited to its configured

size. The values read in the registers are not significant and the written values are ignored if these conditions are not met.

The circuit controls the accesses to the FIFO as follows:

- **Outside a transaction**

The BUSY and FR bits of USTATE are zero and an access to the FIFO causes an error indicated by the AE bit of USTATE.

**Note**

This error is persistent until the USTATE register is read.

In read mode, although there is an error, the content of the first byte of the FIFO is available to the user at the maximum speed of the interface.

- **At the opening of a read transaction**

The BUSY bit is set active but FR is not yet. In this case, the accesses to the FIFO are delayed until the rise of FR. The DTACK<sub>n</sub> signal is activated only after the internal writing of a byte into the FIFO. CS<sub>n</sub> can be deactivated only after DTACK<sub>n</sub> activation.

- **During a write or read transaction**

If the FR bit is set active the access is performed at the maximum speed of the interface, if not, it is delayed until the FIFO is available again.

If a size overflow is detected, the FE bit of USTATE is set active and the accesses are ignored. The FE bit shall be reset by the CLOSE command. In read mode the last valid byte is provided to the user without delay whatever the FIFO status.

If a read is performed after the opening of a write transaction, or if a write is performed after the opening of a read transaction, the AE bit of USTATE is set active and the accesses are ignored.

**Note**

This error is persistent until the USTATE register is read.

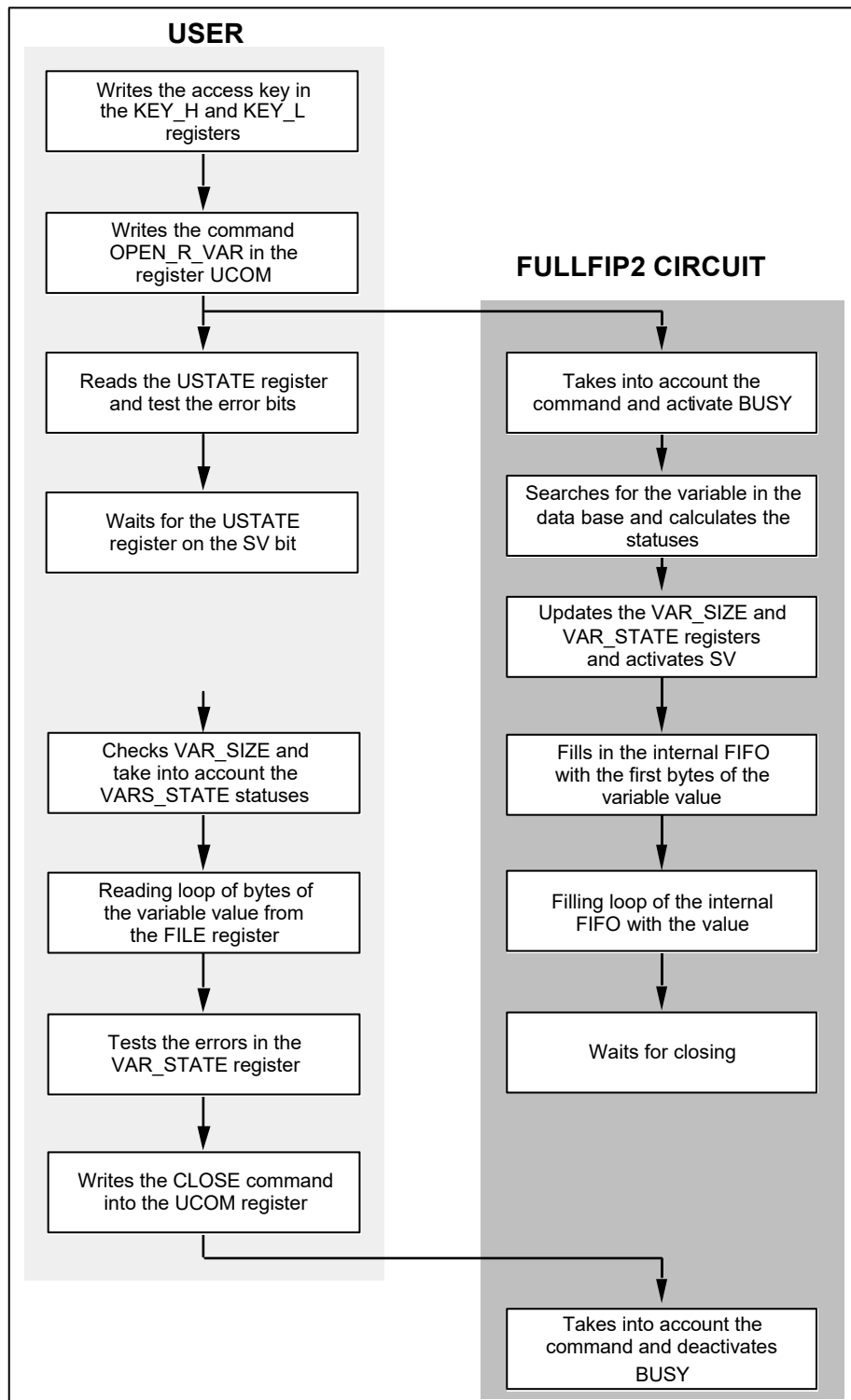


Figure 3.10 - User read transaction

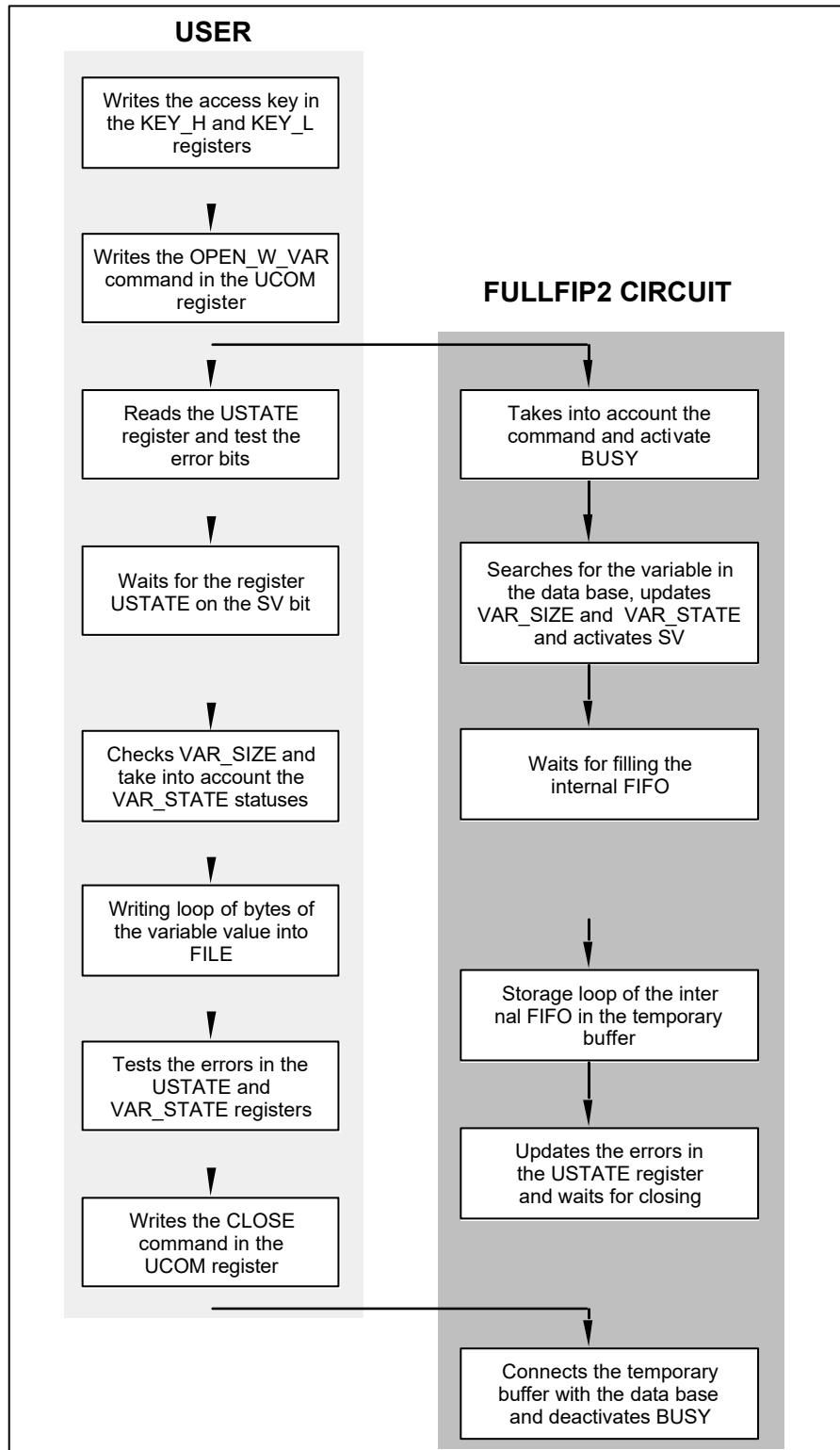


Figure 3.11 - User write transaction

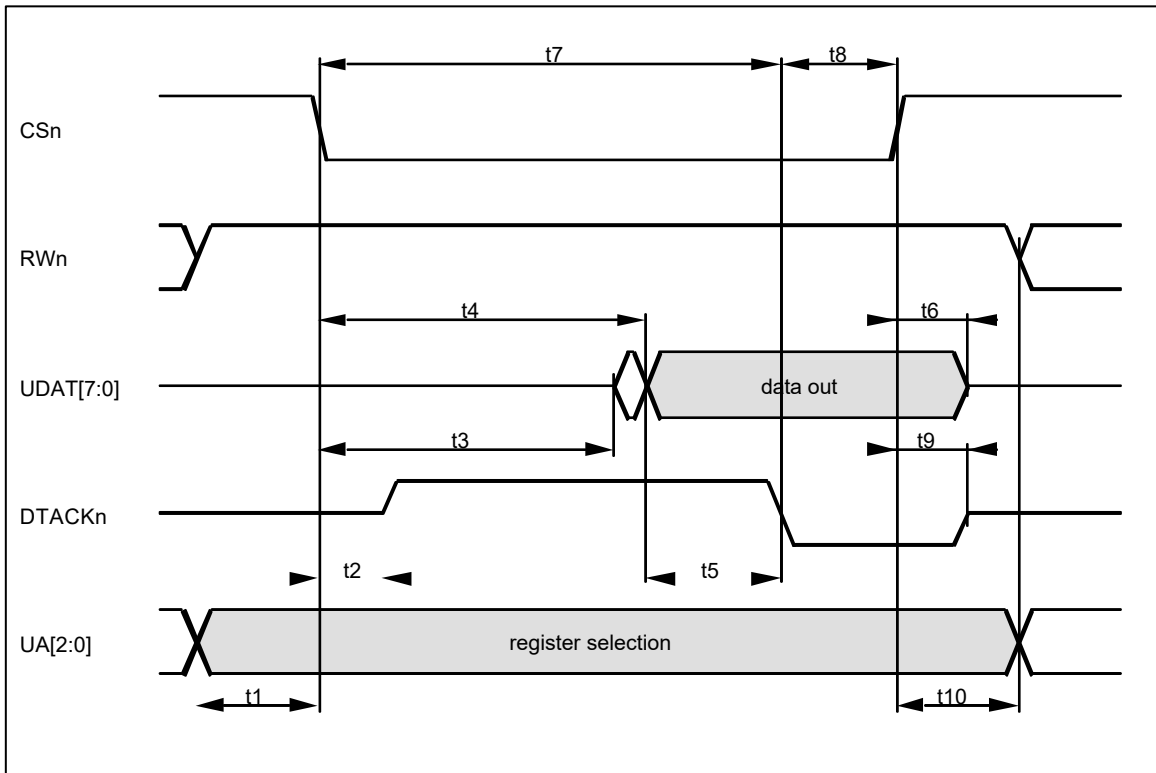


Figure 3.12 - User read cycle - Timing diagram

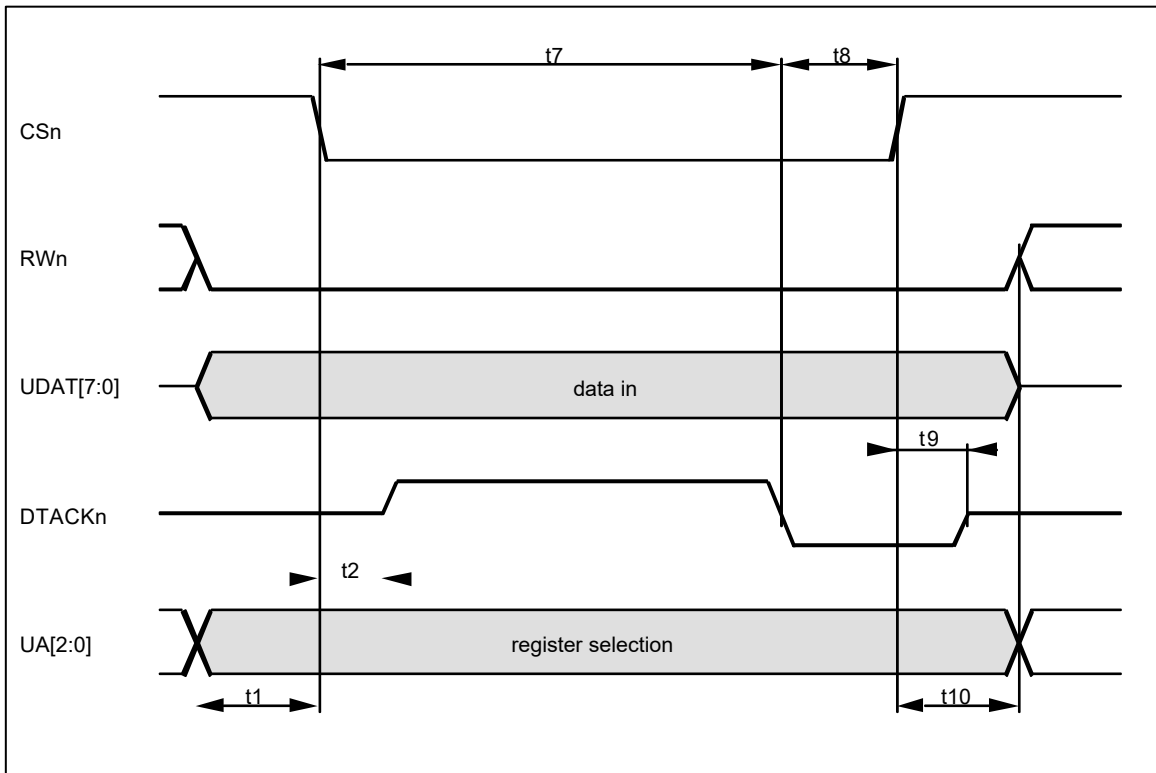


Figure 3.13 - User write cycle - Timing diagram



| Symbol         | Description  | Min  | Max                     |
|----------------|--|------|-------------------------|
| t1             | UA[2:0], UDAT[7:0] (in write mode) and RWn hold time to CSn low    | 5 ns |                         |
| t2             | CSn low to DTACKn high   | 0 ns |                         |
| t3             | CSn low to UDAT[7:0] low Z   | 0 ns |                         |
| t4<br>(Note 1) | CSn low to UDAT[7:0] valid   |      | 8 T + 40 ns<br>(Note 2) |
| t5             | UDAT[7:0] valid to DTACKn low                                      | 0 ns |                         |
| t6             | CSn high to UDAT[7:0] high Z                                       | 0 ns |                         |
| t7<br>(Note 1) | CSn low to DTACKn low  |      | 8 T + 40 ns<br>(Note 2) |
| t8             | DTACKn low to CSn high   | 0 ns |                         |
| t9             | CSn high to DTACKn high Z  | 0 ns |                         |
| t10            | UA[2:0], UDAT[7:0] (in write mode) and RWn hold time from CSn high | 0 ns |                         |

Note 1: When accessing the FILE, VAR\_SIZE or VAR\_STATE registers, while these registers are not ready (i.e. access is performed without preliminary polling of the USTATE register), access cycles are delayed until the registers become ready. In this case the above mentioned delay is not guaranteed anymore.

Note 2: T = 25 ns @ CKIN = 40 MHz  
 15.625 ns @ CKIN = 64 MHz  
 12.5 ns @ CKIN = 80 MHz

Note 3: DTACKn is tri-stated outside the user access cycles. It must be pulled up externally using a 1-KΩ resistor connected to VDD.

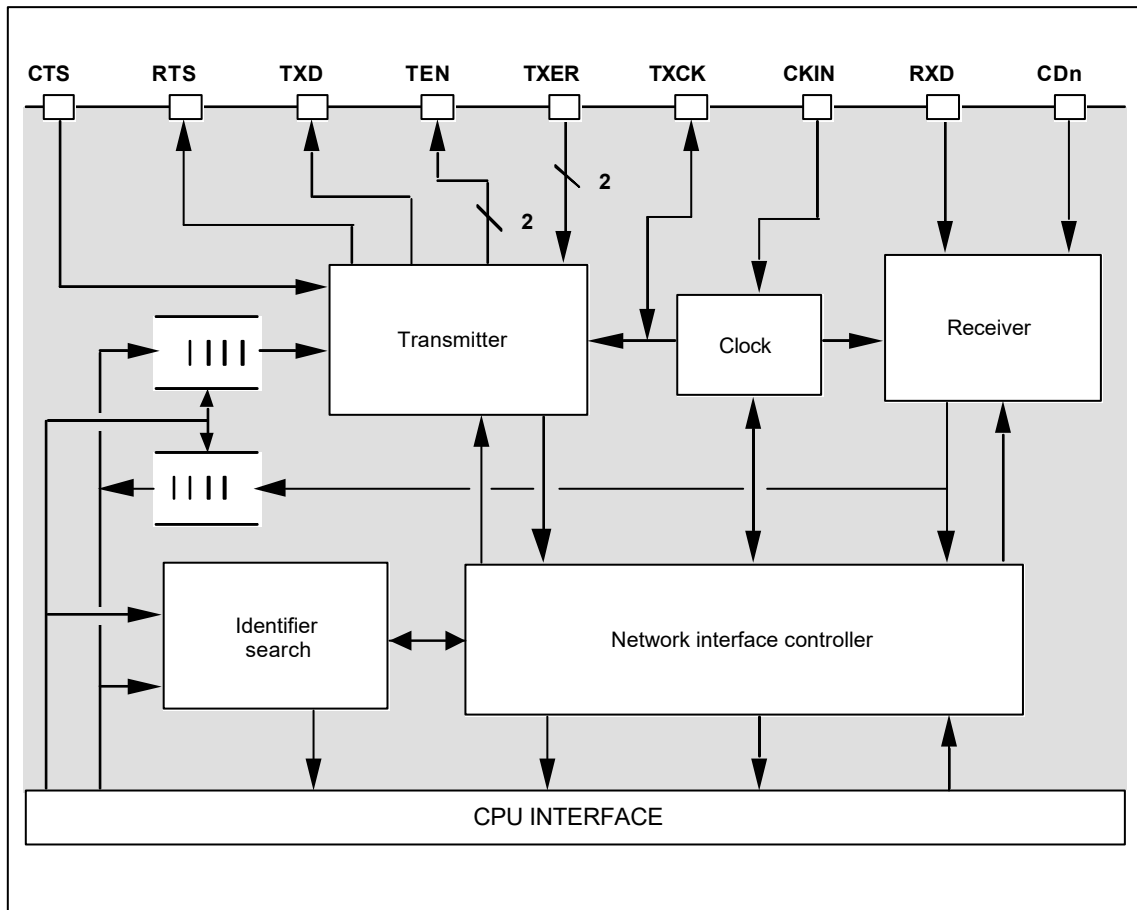
Note 4: Output load on UDAT[7:0], BUSY, EOC, DTACKn, IRQn: 50 pF

**Table 3.5 - User read and write cycle - Timing values**

### 3. NETWORK INTERFACE

#### 3.1. General presentation

The network interface provides the transmission and reception functions of the frames and the clock generation. Moreover it relieves the central unit of all the critical time tasks in particular the identifier search, the timer management and the pre-interpretation of the network transaction in receive mode.



**Figure 3.14 - Network interface block diagram**

The FULLFIP2 can handle two redundant channels, using an external channel selector such as FIELDUAL.

The transmission is made simultaneously on the two channels, and the reception the selected one.

FULLFIP2 manages redundancy management by controlling a channel selector, which is a peripheral on its private bus.

### 3.2. Signal description

The interface with the line transceiver is composed of the following signals:

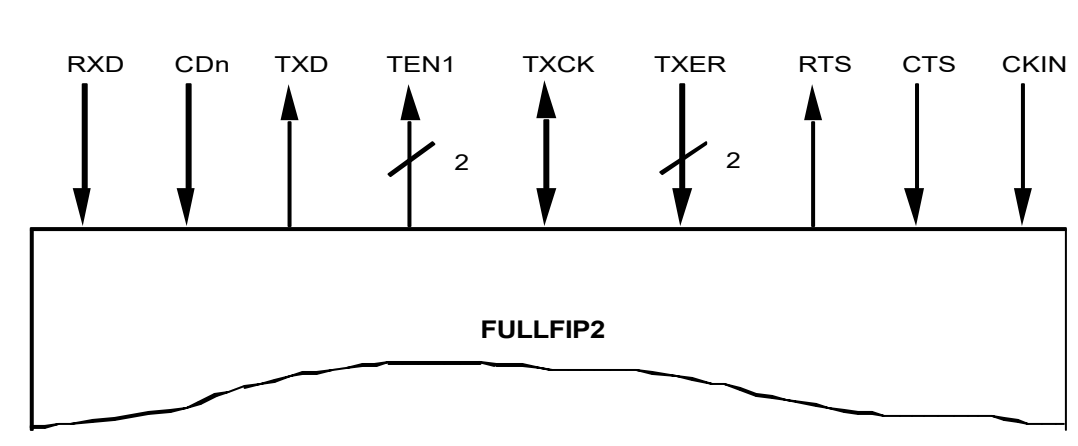


Figure 3.15 - Electrical interface with the line transceiver

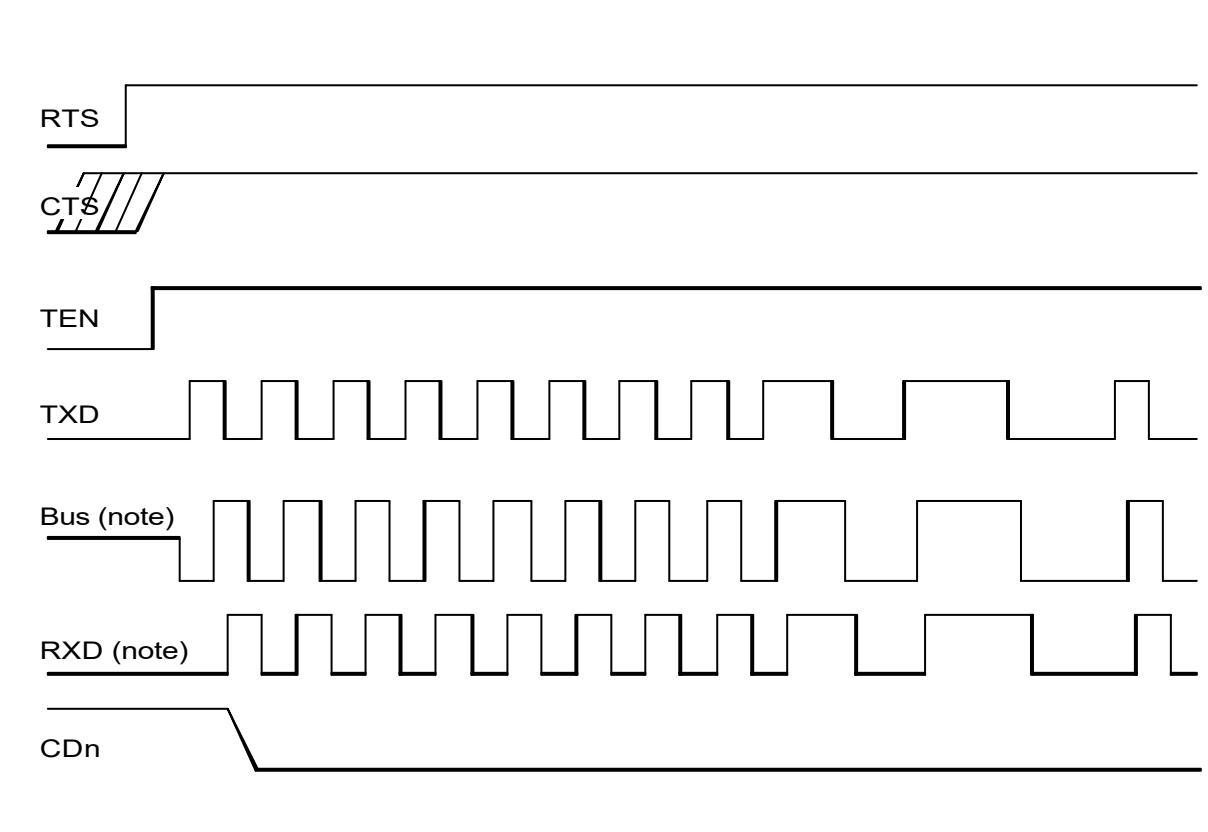
### 3.3. Functional model in transmission

In the transmitter section the signal TEN is designed to validate the bus drivers. This signal is synchronous with the serial Manchester data TXD. The signals RTS and CTS are intended to synchronize the circuit in an external way in specific applications. Within the simplest applications CTS can be connected to VDD and in this case RTS is not connected.

In most applications TXCK is configured by the FULLFIP2 internal microcode as an output that can be used by the line transceiver circuitry such as FIELDRIEVE.

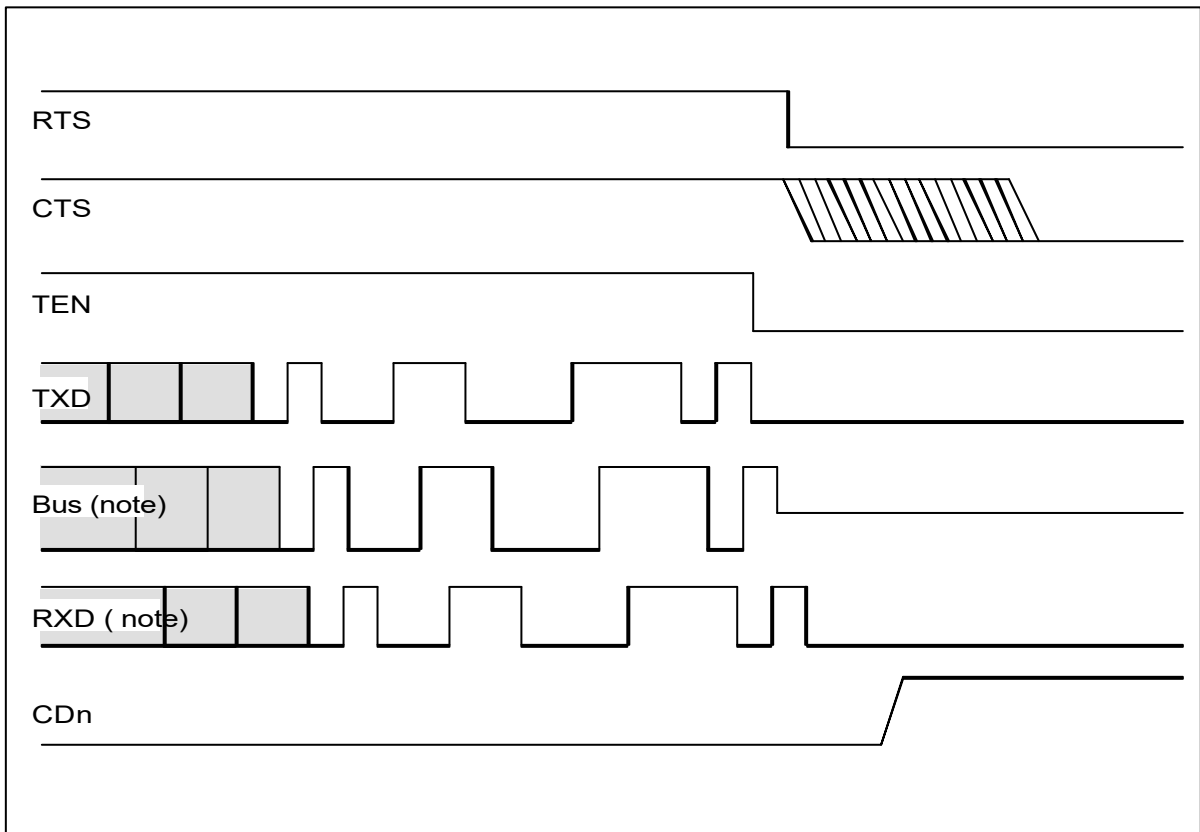
For more sophisticated applications the TXCK pin can be programmed as an input or an output which permits to drive the transmitter by means of an external clock.

The signal TXER permits to indicate the errors detected by the line drivers to the circuit. The transmission errors may be due to underloads or overloads on the drivers.



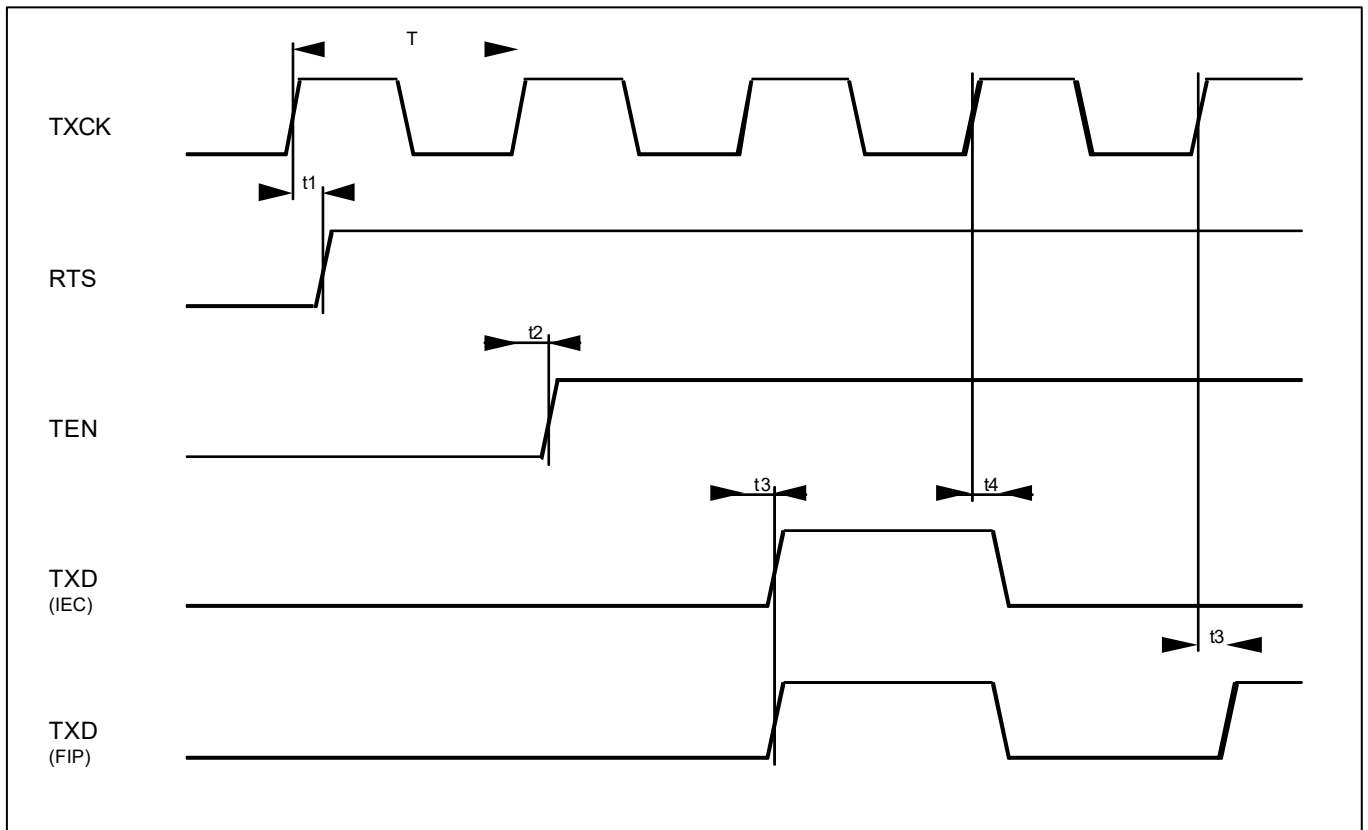
**Figure 3.16 - Start of frame (AFNOR/UTE delimiters)**

Note: The behavior of the bus signal and the RXD signal depends on the dynamic response of the line transceiver used.



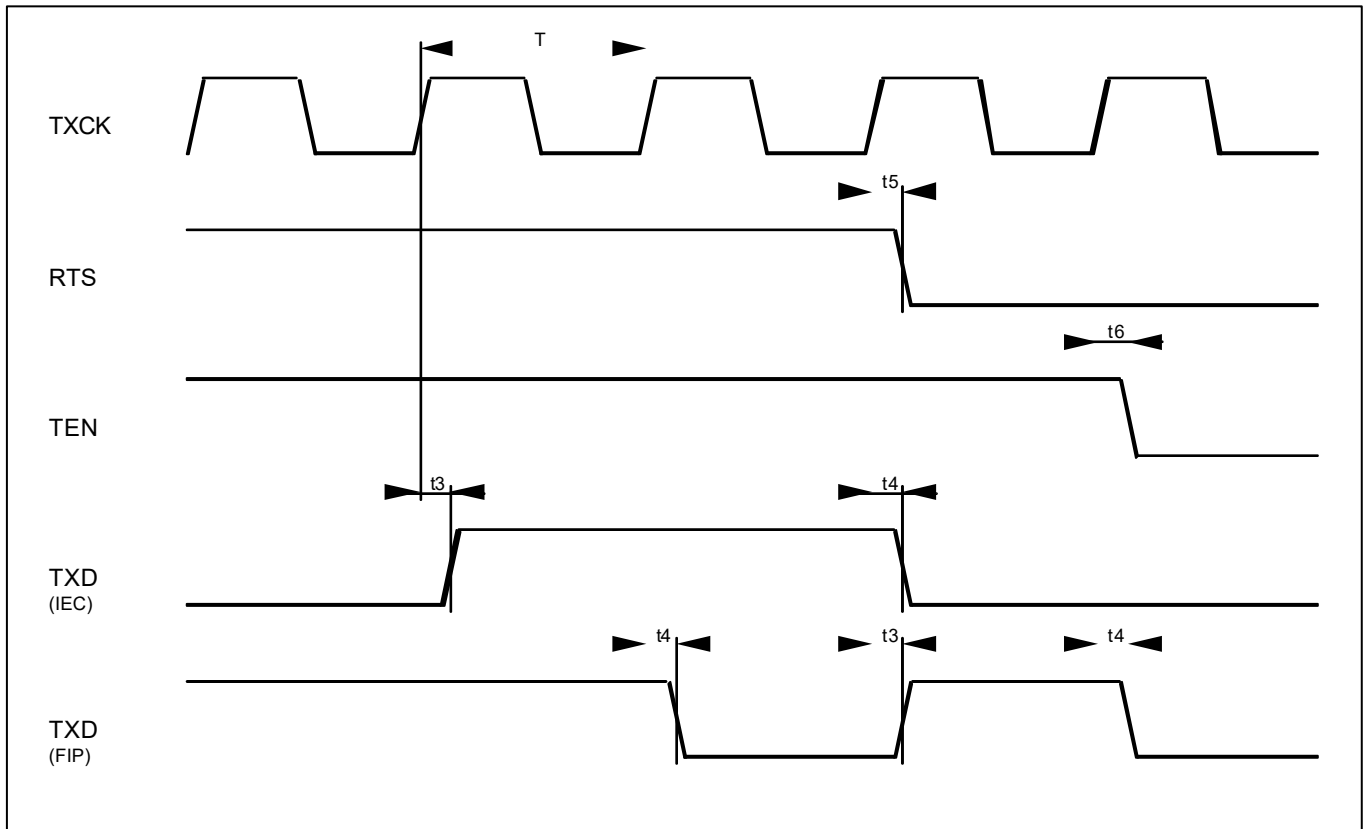
**Figure 3.17 - End of frame (AFNOR/UTE delimiters)**

Note: The behavior of the bus signal and the RXD signal depends on the dynamic response of the line transceiver used.



Note: T = 16  $\mu$ s @ Network bitrate = 31.25 Kbit/s  
 500 ns @ Network bitrate = 1 Mbit/s  
 200 ns @ Network bitrate = 2.5 Mbit/s  
 100 ns @ Network bitrate = 5 Mbit/s

**Figure 3.18 - Start of Frame - Transmission cycle timing diagram**



Note: T = 16  $\mu$ s @ Network bitrate = 31.25 Kbit/s  
 500 ns @ Network bitrate = 1 Mbit/s  
 200 ns @ Network bitrate = 2.5 Mbit/s  
 100 ns @ Network bitrate = 5 Mbit/s

**Figure 3.19 - End of Frame - Transmission cycle timing diagram**

| Symbol | Description           | Min     | Max   |
|--------|-----------------------|---------|-------|
| t1     | TXCK high to RTS high | - 10 ns | 30 ns |
| t2     | TXCK high to TEN high | - 10 ns | 30 ns |
| t3     | TXCK high to TXD high | - 10 ns | 30 ns |
| t4     | TXCK high to TXD low  | - 10 ns | 30 ns |
| t5     | TXCK high to RTS low  | - 10 ns | 30 ns |
| t6     | TXCK high to TEN low  | - 10 ns | 30 ns |

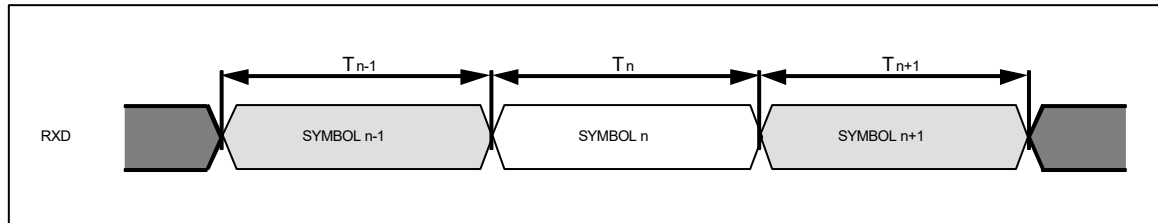
Note: Output load on RTS, TXD, TEN, TXCK : 50 pF

**Table 3.6 - Transmission cycle - Timing values**

### 3.4. Functional model in reception

In the receiver section the input CDn identifies the frame envelope. When CDn is inactive the serial manchester input RXD is ignored. Moreover this carrier detection signal is used for the sequence checking of the frames in order to determine the bus activity.

A received frame is composed of consecutive symbols as represented in the Figure 3.20.



**Figure 3.20 - RXD signal timing diagram**

Typical duration and shape of a received symbol shall be in accordance with the IEC and AFNOR/UTE communication protocol standards.

Temporal distortion of the symbol 'n' received at the RXD input is calculated as follows :

$$\text{Distortion (\%)} = 100 * | T_n - T_{ideal} | / T_{ideal}$$

where  $T_n$  : duration of the symbol 'n' received

$T_{ideal}$  : duration of the ideal symbol

For the FULLFIP2 component, accepted temporal distortion shall not be greater than 15% and accepted jitter on 48 consecutive received bits shall not be greater than 1% whatever the network bitrate.



### 3.5. Network bitrate, clock signals and timers

The selected network bitrate depends both on the value of the internal programmable 16-bit `TIMER_CNT` register and the frequency of the basic clock signal driving the FULLFIP2 chip through the CKIN pin as shown in the Table 3.7. The `TIMER_CNT` register may be configured only by using microcodes.

The maximum frequency of the basic clock signal is limited to 80 MHz in order to guarantee the operation of the entire circuit (worst case condition:  $VDD = 4.75\text{ V}$  /  $T_{amb} = +85\text{ }^{\circ}\text{C}$ ). From the basic clock signal, internal clock signals are derived for the central processor unit, the transmitter and receiver circuitry, the line activity timers and the stamping timers.

In transmit mode a clock signal is generated at a frequency double of the bit frequency on the network by the FULLFIP2 circuit when it works in master mode; in this case the TXCK pin is set as output for this signal. When the circuit works in slave mode it receives its transmit clock signal from the outside by the TXCK pin. The operation mode is defined at the system configuration by the microcode.

In receive mode, a clock signal is generated to sample the received signal from the line transceiver.

Internal timers are handled by the transmitter and the receiver circuitry to monitor the line activity and to fix the turn-around time of the station and the network silence time-out.

Internal stamping timers are handled in order to date the events processed by the FULLFIP2 circuit. Internal stamping timers are incremented at every time slot period; the value of the time slot period can be configured only by the FULLFIP2 internal microcode.

| Network bitrate | Basic clock frequency<br>(CKIN input) |
|-----------------|---------------------------------------|
| 31.25 Kbit/s    | 40 MHz                                |
| 1 Mbit/s        | 64 MHz                                |
| 2.5 Mbit/s      | 80 MHz                                |
| 5 Mbit/s        | 80 MHz                                |

**Table 3.7 - Basic clock frequency requirement for a selected network bitrate**

# Chapter 4 *Electrical characteristics*

| Parameter                            | Comments | Min  | Typ | Max          | Unit |
|--------------------------------------|----------|------|-----|--------------|------|
| Absolute supply voltage range        |          | -0.3 |     | 6.0          | V    |
| Absolute voltage range on input pins |          | -0.3 |     | VDD<br>+ 0.3 | V    |
| Storage temperature                  |          | -40  |     | +125         | °C   |

**Table 4.1 - Absolute maximum ratings** <sup>(1)</sup>

| Symbol                                | Parameter                                  | Comments                          | Min  | Typ | Max         | Unit |
|---------------------------------------|--|-----------------------------------|------|-----|-------------|------|
| VDD                                   | Supply voltage range                       |                                   | 4.5  | 5.0 | 5.5         | V    |
| VIH                                   | Input voltage high                         | Any input except RESETn           | 2.0  |     | VDD<br>+0.3 | V    |
| VIL                                   | Input voltage low                          | Any input except RESETn           | -0.3 |     | 0.8         | V    |
| VOH                                   | Output voltage high                        |                                   | 2.4  |     |             | V    |
| VOL                                   | Output voltage low                         |                                   |      |     | 0.4         | V    |
| VT-                                   | Schmitt-Trigger negative going threshold   | RESETn input                      | 0.7  |     | 1.2         | V    |
| VT+                                   | Schmitt-Trigger positive going threshold   | RESETn input                      | 1.6  |     | 2.1         | V    |
| CIN, COUT                             | Input and output pin capacitance           | Pad capacitance including package |      | 10  |             | pF   |
| IIN, IOZ                              | Input and tri-state output leakage current |                                   | -10  |     | +10         | µA   |
| Base operating frequency (CKIN input) |  | Network bit rate = 31.25 Kbit/s   |      | 40  |             | MHz  |
|                                       |  | Network bit rate = 1 Mbit/s       |      | 64  |             | MHz  |
|                                       |  | Network bit rate = 2.5 Mbit/s     |      | 80  |             | MHz  |
|                                       |  | Network bit rate = 5 Mbit/s       |      | 80  |             | MHz  |
| Normal operating free-air temperature |  |                                   | -40  |     | +85         | °C   |

**Table 4.2 - Functional characteristics**

| Symbol | Parameter      | Test conditions              | Min | Typ | Max | Unit |
|--------|----------------|------------------------------|-----|-----|-----|------|
| Icc    | Supply current | CKIN = 40 MHz @ 31.25 Kbit/s |     | 28  |     | mA   |
|        |                | CKIN = 64 MHz @ 1 Mbit/s     |     | 43  |     | mA   |
|        |                | CKIN = 80 MHz @ 2.5 Mbit/s   |     | 52  |     | mA   |
|        |                | CKIN = 80 MHz @ 5 Mbit/s     |     | 52  |     | mA   |

**Table 4.3 - Consumption** <sup>(2)</sup>

1. Absolute maximum ratings are values beyond which the device may be damaged or have its useful life impaired. Functional operation under these conditions is not implied.
2. The mean values of the supply current are measured within a typical user application running the FIPCODE microcode.



Chapter *Physical dimensions*  
5

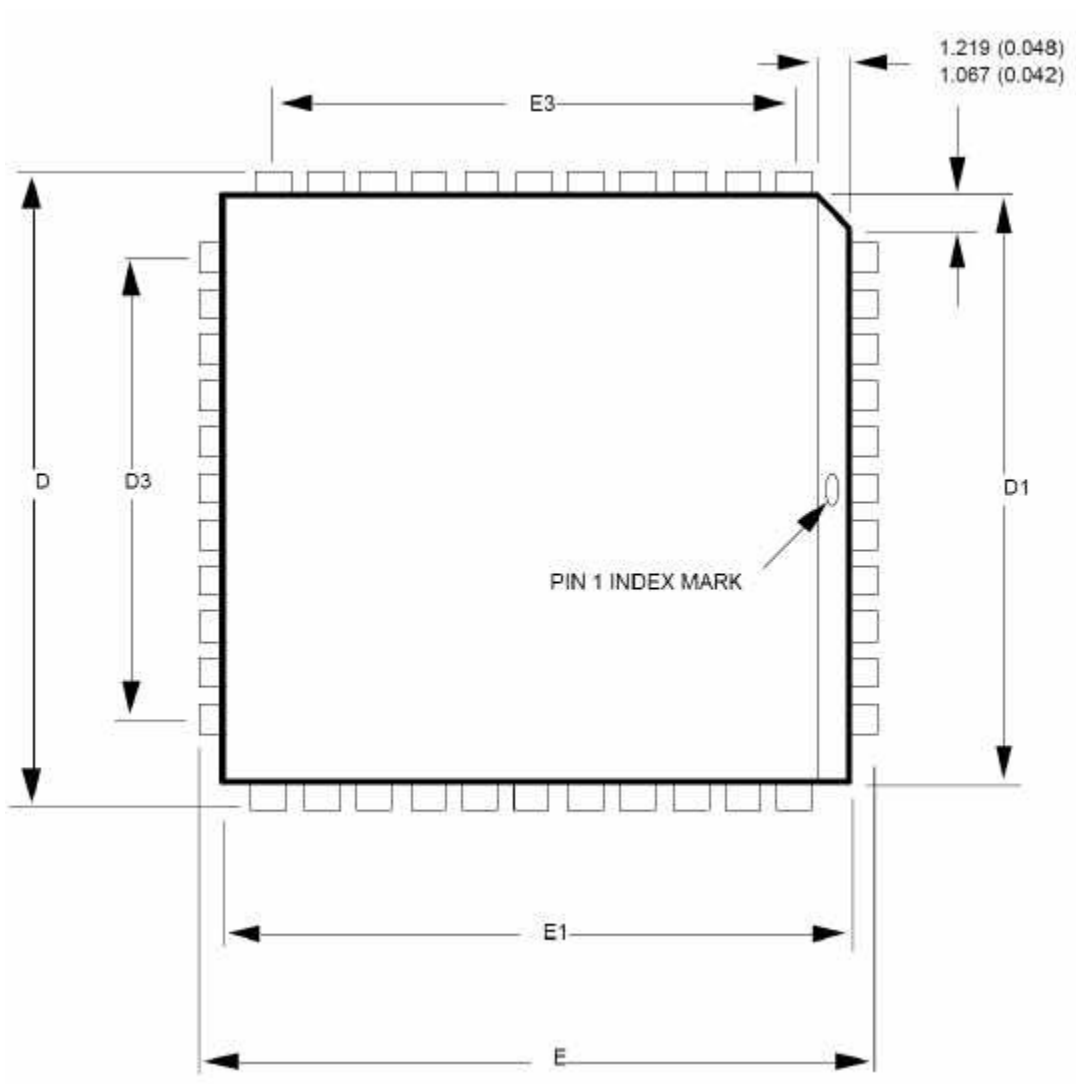


Figure 5.1 - PLCC84 package outlines

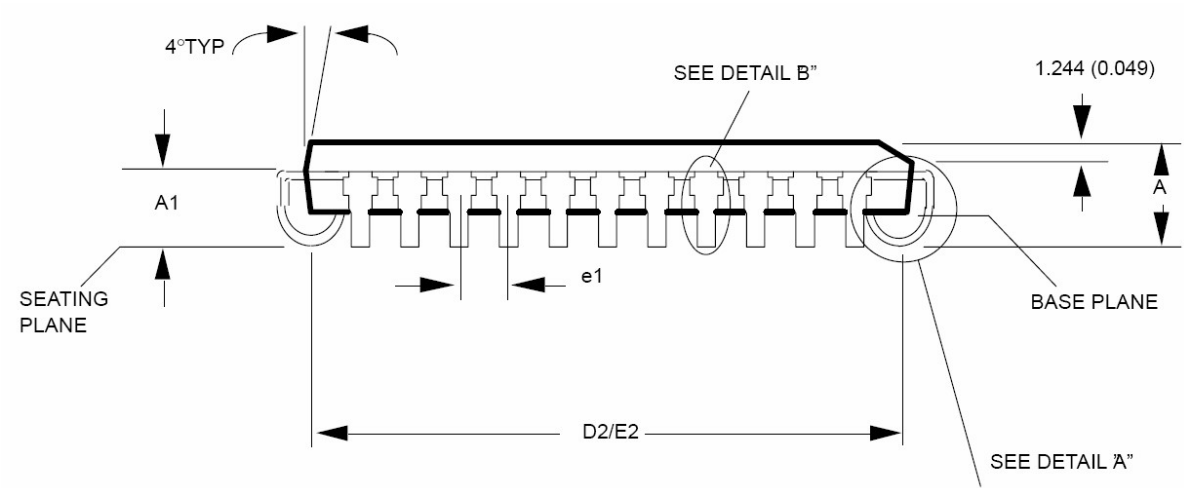


Figure 5.1 - PLCC84 package outlines (continued)

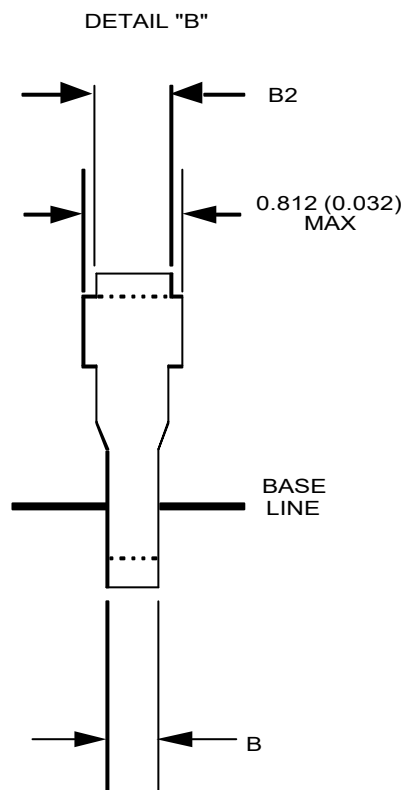
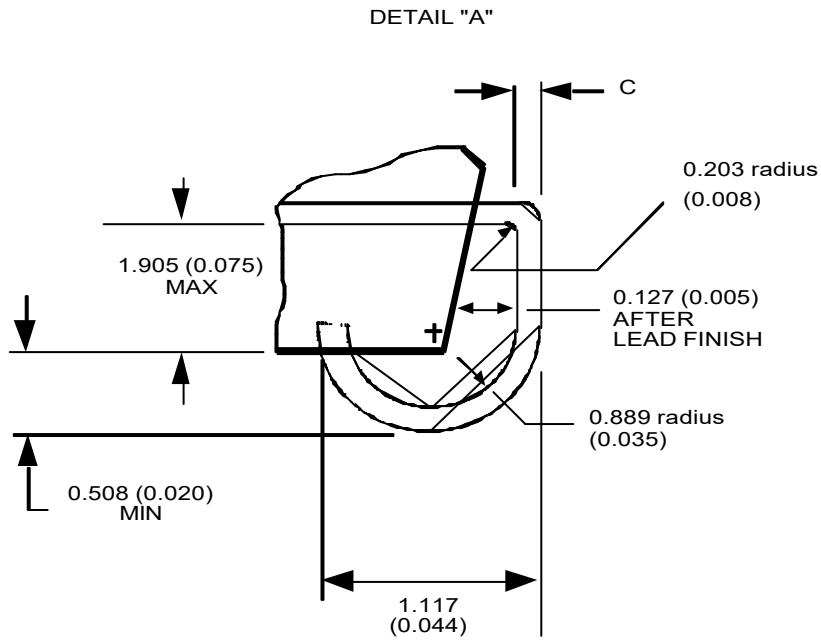


Figure 5.2 - PLCC84 package outlines - Terminal details

| <b>SYMBOL</b> | <b>MINIMUM<br/>mm<br/>(inch)</b> | <b>MAXIMUM<br/>mm<br/>(inch)</b> |
|---------------|----------------------------------|----------------------------------|
| A             | 4.19<br>(0.165)                  | 4.57<br>(0.180)                  |
| A1            | 2.41<br>(0.095)                  | 3.00<br>(0.118)                  |
| B             | 0.330<br>(0.013)                 | 0.533<br>(0.021)                 |
| B2            | 0.660<br>(0.026)                 | 0.813<br>(0.032)                 |
| C             | 0.203<br>(0.008)                 | 0.254<br>(0.010)                 |
| D             | 30.10<br>(1.185)                 | 30.35<br>(1.195)                 |
| D1            | 29.21<br>(1.150)                 | 29.36<br>(1.156)                 |
| D2            | 27.69<br>(1.090)                 | 28.70<br>(1.130)                 |
| D3            | 25.40 REF<br>(1.000 REF)         |                                  |
| E             | 30.10<br>(1.185)                 | 30.35<br>(1.195)                 |
| E1            | 29.21<br>(1.150)                 | 29.36<br>(1.156)                 |
| E2            | 27.69<br>(1.090)                 | 28.70<br>(1.130)                 |
| E3            | 25.40 REF<br>(1.000 REF)         |                                  |
| e1            | 1.27 TYP<br>(0.050 TYP)          |                                  |
| N             | 84 pins                          |                                  |
| ND            | 21 pins                          |                                  |
| NE            | 21 pins                          |                                  |

Table 5.1 - PLCC84 package dimensions

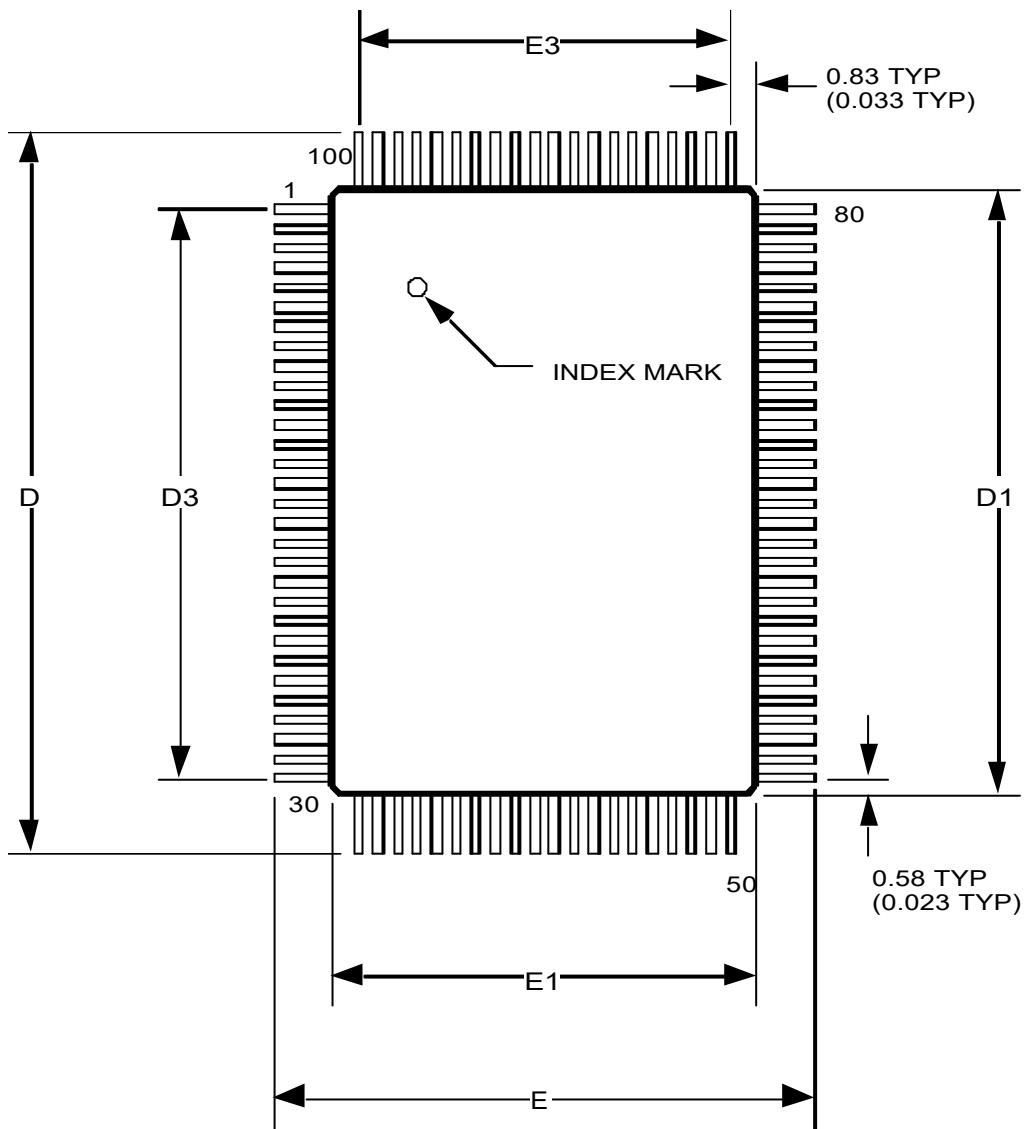


Figure 5.3 - MQFP100 package outlines



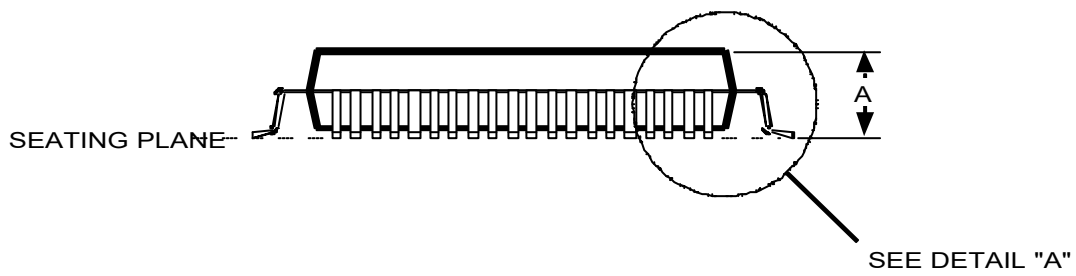


Figure 5.3 - MQFP100 package outlines (continued)

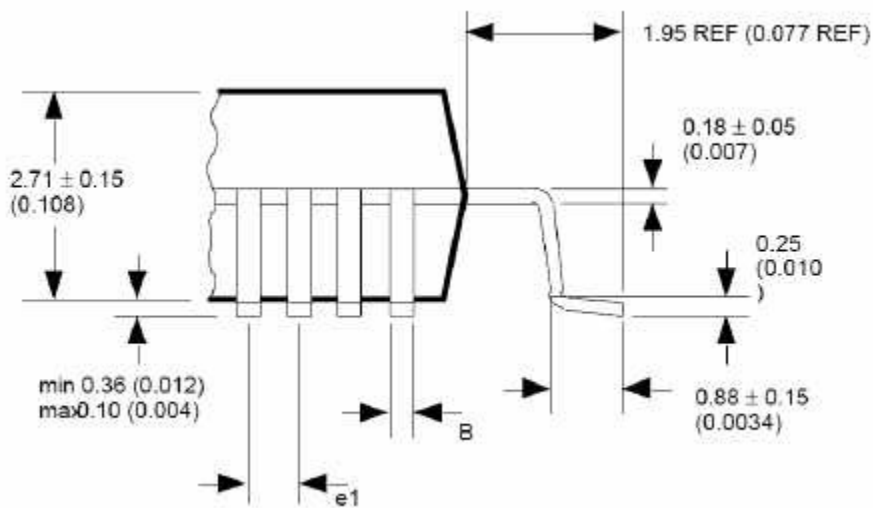


Figure 5.4 - MQFP100 package outlines - Terminal details

| SYMBOL | MINIMUM                  | MAXIMUM          |
|--------|--------------------------|------------------|
|        | mm<br>(inch)             | mm<br>(inch)     |
| A      |                          | 3.10<br>(0.134)  |
| B      | 0.22<br>(0.009)          | 0.38<br>(0.015)  |
| D      | 23.65<br>(0.931)         | 24.15<br>(0.951) |
| D1     | 19.90<br>(0.783)         | 20.10<br>(0.791) |
| D3     | 18.84 REF<br>(0.742 REF) |                  |
| E      | 17.65<br>(0.695)         | 18.15<br>(0.715) |
| E1     | 13.90<br>(0.547)         | 14.10<br>(0.555) |
| E3     | 12.34 REF<br>(0.486 REF) |                  |
| e1     | 0.65 TYP<br>(0.025 TYP)  |                  |
| N      | 100 pins                 |                  |
| ND     | 30 pins                  |                  |
| NE     | 20 pins                  |                  |

**Table 5.2 - MQFP100 package dimensions**



# Chapter 6 *Application notes*

## 1. INTERFACING WITH THE MOTOROLA 68000 MICROPROCESSOR

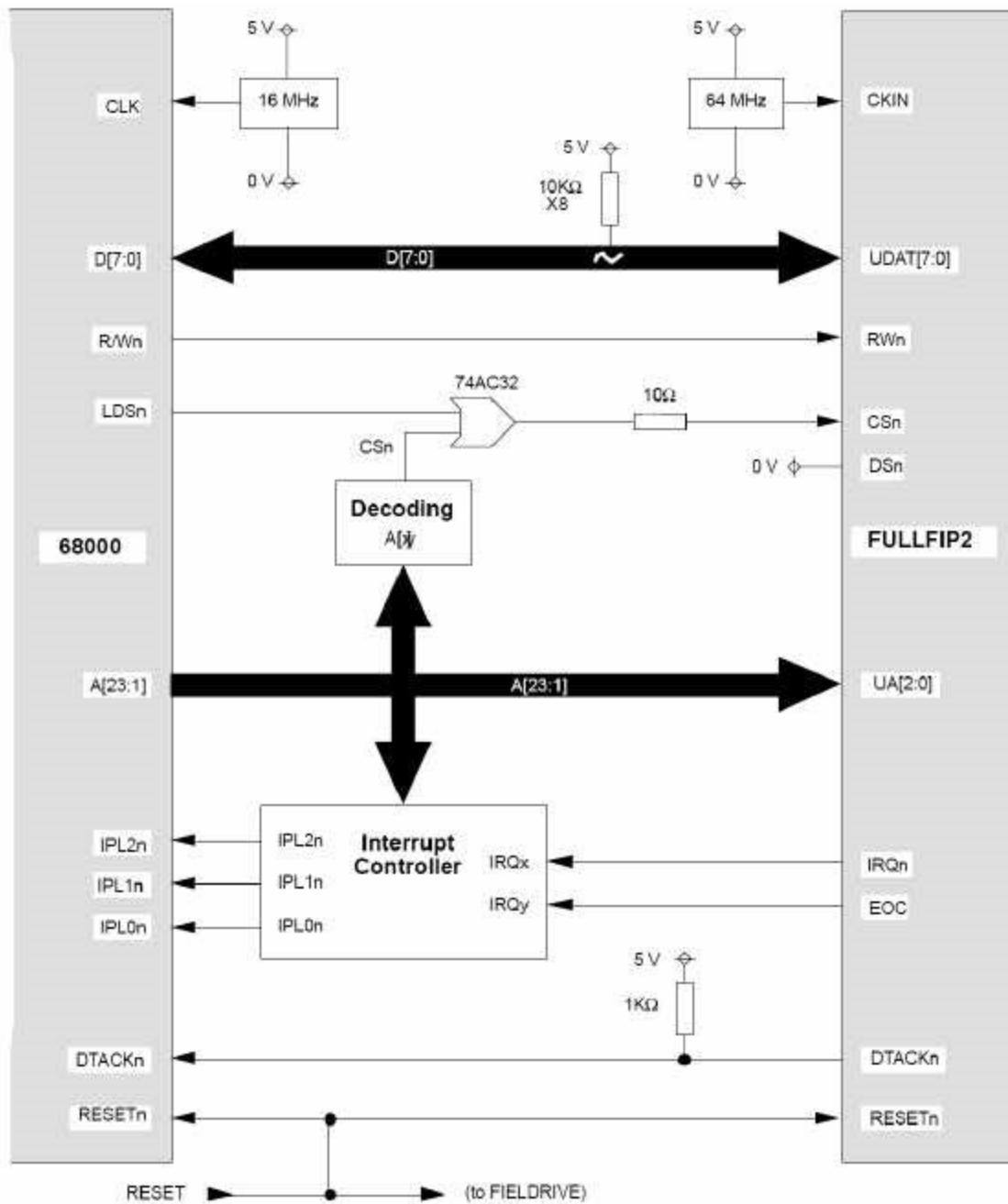


Figure 6.1 - FULLFIP2 interface with a 68000

## 2. INTERFACING WITH THE INTEL 80C188 MICROPROCESSOR

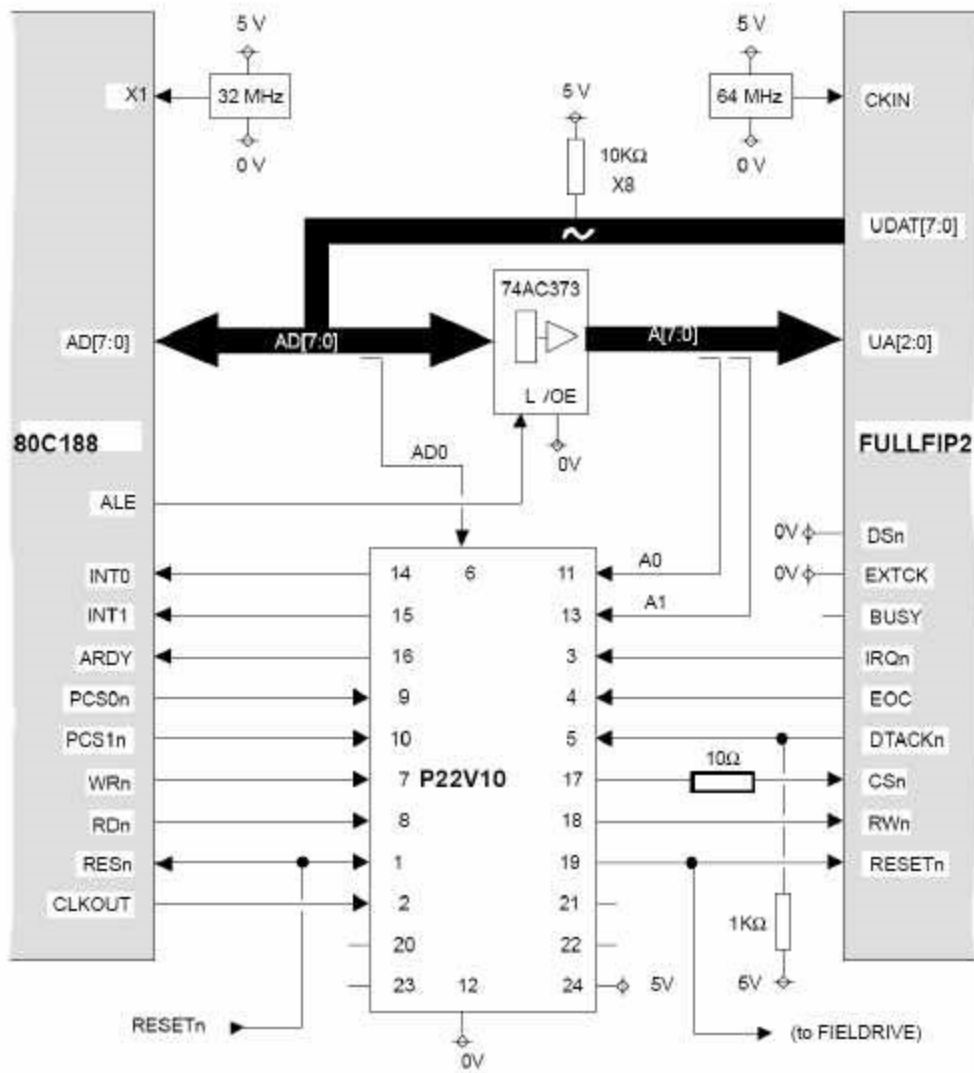
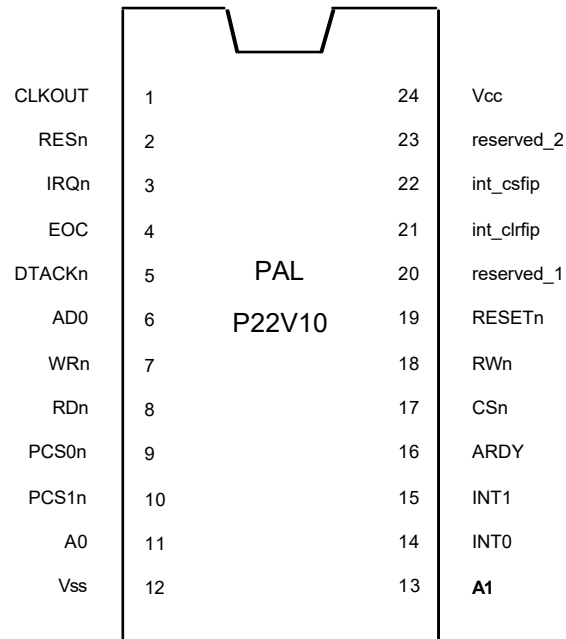


Figure 6.2 - FULLFIP2 interface with a 80C188



**Figure 6.3 - PAL P22V10 component pinout**

**Reduced equations of the PAL P22V10 component :**

```

int_csfp := (!PCS1n & !WRn # !PCS1n & !RDn);

int_clrfip := (WRn & int_clrfip
               # AD0 & int_clrfip
               # A1 & int_clrfip
               # A0 & int_clrfip
               # PCS0n & int_clrfip
               # !A0 & !A1 & AD0 & !PCS0n & !RESn & !WRn);

RESETn = (RESn & !int_clrfip);

RWn = (WRn);

!CSn = (!WRn & int_csfp # !RDn & int_csfp);

!ARDY = (!DTACKn # PCS1n);

!INT1 = (EOC);

!INT0 = (IRQ0n);

```

### 3. INTERFACING WITH THE EXTERNAL PRIVATE MEMORY

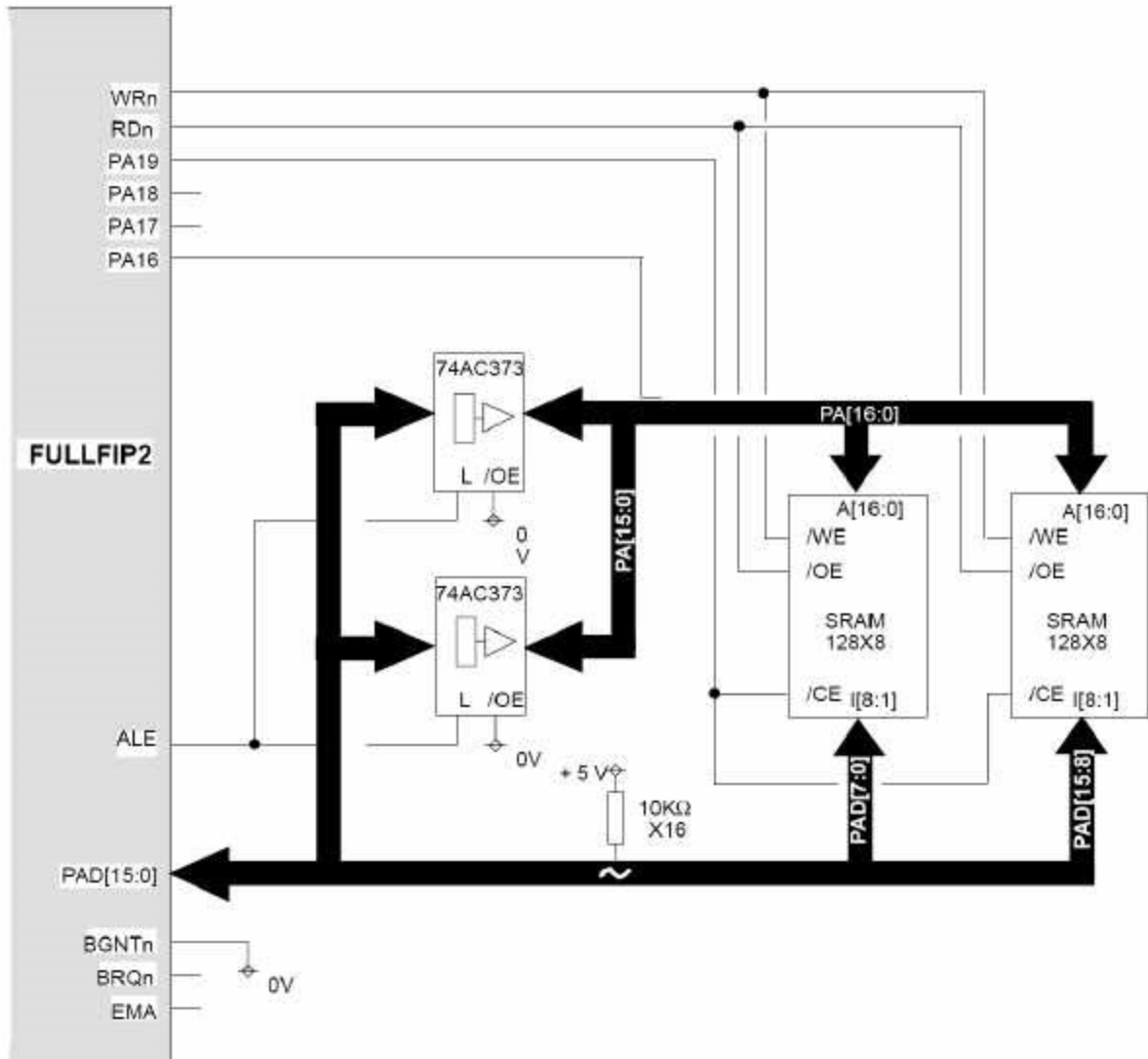


Figure 6.4 - External private memory interface

## 4. INTERFACING WITH THE LINE TRANSCEIVER

The communication processor FULLFIP2 needs to be connected to the WorldFIP fieldbus through a line driver such as FIELDRIVE which is especially designed to adapt the logical signal of the communication processor inputs/outputs to the signal of the bus.

Moreover, it is recommended to ensure a galvanic isolation between the WorldFIP bus and the line driver with a transformer such as FIELDTR. The insertion of a capacitor between the fieldbus and the FIELDTR line isolating transformer avoids transformer saturation by an eventual continuous current component.

The Figure 6.5 shows a typical example using the FIELDRIVE line driver connected to the FULLFIP2 component in a single medium configuration.

A protection of the FIELDRIVE line driver input/output against overvoltage generated on the bus outside the -10 V/+10 V range is recommended in every example shown hereafter.

The connection of the subscriber to the bus is made with a 9-pin male connector J9.

|             |
|-------------|
| <b>Note</b> |
|-------------|

For further information about the medium redundancy refer to [4].



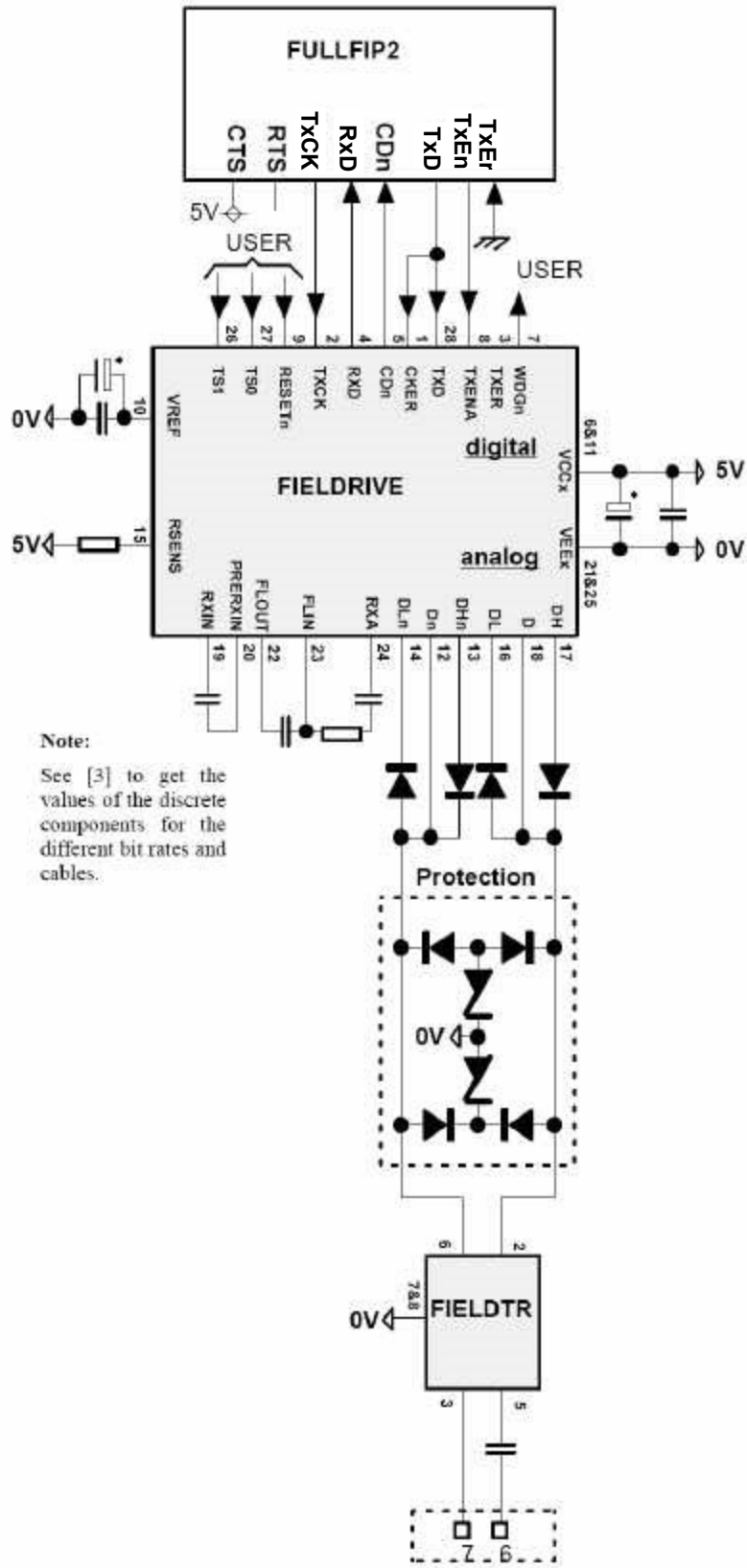


Figure 6.5 - Implementation of a fieldbus connection in single medium configuration

# Chapter 7

## Board design rules

---

---

The FULLFIP2 can be used as fully compatible with the first-generation FULLFIP chip. This will allow you a direct replacement of the FULLFIP component by the PLCC84-package FULLFIP2 on existing boards, that can be exercised without any change on the software libraries.

However, it is mandatory to verify that the following rules are satisfied on the design:

- **Initialization**

During the component initialization phase, when the RESETn input pin is kept active, the TXER input signal must be kept not active then forced to the low level.

This pin is checked by the internal hardware circuitry to force all timings compatible between FULLFIP and FULLFIP2.

- **CSn as unique chip select**

User access with FULLFIP2 is now driven using the CSn input pin. DS<sub>n</sub> is no more taken into account. This makes the access simpler (in most designs with FULLFIP CS<sub>n</sub> and DS<sub>n</sub> were connected together).

The end of the user access cycles, DTACK<sub>n</sub> output signal goes directly from active low state to the tri-stated value. This places the requirement for a 1 kΩ external pullup resistor on the DTACK<sub>n</sub> pin.

- **External resistors on unconnected input pins**

Input pins that are not dynamically driven on the design with FULLFIP2 must be pulled up or down externally, even if an internal pulling resistor in the component has been specified.

- **Board testing issue**

TSTn[2:0] test control input pins must be kept inactive high during FULLFIP2 operation. In addition, if TSTn[1] is connected to VDD through a 1 kΩ resistor, it is possible to force all circuit outputs, except MCK, and all I/Os at the tri-stated level by placing an active low value on TSTn[1]. This feature can be used for board testing purpose.

| Signal    | Description  | Pin  | External pulling   |
|-----------|--|--|--|
| TSTCK     | External test clock.   | 1  | 1 K $\Omega$ or direct to VDD  |
| MA[8:0]   | Microprogrammed address, tri-stated if EMAn = high.  | 5<br>4<br>3<br>79<br>78<br>77<br>76<br>75<br>74  | 22 K $\Omega$ to VDD<br>22 K $\Omega$ to VDD<br>22 K $\Omega$ to VDD<br>22 K $\Omega$ to VDD<br>22 K $\Omega$ to VDD<br>22 K $\Omega$ to VDD<br>22 K $\Omega$ to VDD<br>22 K $\Omega$ to VDD   |
| RTSK      | Running task, tri-stated if EMAn = high.   | 6  | 22 K $\Omega$ to VDD   |
| PA[19:16] | Non multiplexed address bus, tri-stated if BGNTn = high (if BGNTn used).   | 12<br>13<br>14<br>15   | 10 K $\Omega$ to VDD<br>10 K $\Omega$ to VDD<br>10 K $\Omega$ to VDD<br>10 K $\Omega$ to VDD   |
| PAD[15:0] | Multiplexed address bus, tri-stated outside external private memory access cycles.   | 16<br>17<br>18<br>19<br>20<br>21<br>22<br>25<br>30<br>31<br>32<br>33<br>34<br>35<br>36<br>37 | 10 K $\Omega$ to VDD<br>10 K $\Omega$ to VDD<br>10 K $\Omega$ to VDD<br>10 K $\Omega$ to VDD<br>10 K $\Omega$ to VDD<br>10 K $\Omega$ to VDD<br>10 K $\Omega$ to VDD<br>10 K $\Omega$ to VDD<br>10 K $\Omega$ to VDD<br>10 K $\Omega$ to VDD<br>10 K $\Omega$ to VDD<br>10 K $\Omega$ to VDD<br>10 K $\Omega$ to VDD<br>10 K $\Omega$ to VDD<br>10 K $\Omega$ to VDD<br>10 K $\Omega$ to VDD |
| BGNTn     | Bus Grant for memory access.   | 29   | 1 K $\Omega$ or direct to VSS  |
| CTS       | Clear To Send.   | 42   | 1 K $\Omega$ or direct to VDD  |
| EXTCK     | External test clock selection.   | 53   | 1 K $\Omega$ or direct to VSS  |
| Reserved  | (DSn in the first generation)  | 56   | connect to CSn or VDD or VSS   |
| UDAT[7:0] | User data bus, tri-stated outside user access.   | 64<br>63<br>62<br>61<br>60<br>59<br>58<br>57   | 10 K $\Omega$ to VDD<br>10 K $\Omega$ to VDD<br>10 K $\Omega$ to VDD<br>10 K $\Omega$ to VDD<br>10 K $\Omega$ to VDD<br>10 K $\Omega$ to VDD<br>10 K $\Omega$ to VDD<br>10 K $\Omega$ to VDD   |
| DTACKn    | User access data acknowledge, tri-stated when non active.  | 71   | 1K $\Omega$ to VDD   |
| TSTn[2:0] | Test control signals.<br>Placing TSTn[1] at low level externally forces all outputs and I/Os tri-stated.<br>This can be used for board testing purposes. | 84<br>81<br>80   | 1K $\Omega$ or direct to VDD<br>1K $\Omega$ to VDD<br>1K $\Omega$ or direct to VDD   |
| Reserved  | (TXER2 in the first generation)  | 44   | Direct to VSS  |

**Table 7.1 - Value of the external pulling resistors - PLCC84 package**

| Signal    | Description  | Pin   | External pulling   |
|-----------|--|---|--|
| TSTCK     | External test clock.   | 90  | 1 K $\Omega$ or direct to VDD  |
| MA[8:0]   | Microprogrammed address, tri-stated if EMAn = high.  | 94<br>93<br>92<br>84<br>83<br>82<br>81<br>80<br>76  | 22 K $\Omega$ to VDD<br>22 K $\Omega$ to VDD<br>22 K $\Omega$ to VDD<br>22 K $\Omega$ to VDD<br>22 K $\Omega$ to VDD<br>22 K $\Omega$ to VDD<br>22 K $\Omega$ to VDD<br>22 K $\Omega$ to VDD<br>22 K $\Omega$ to VDD   |
| RTSK      | Running task, tri-stated if EMAn = high.   | 95  | 22 K $\Omega$ to VDD   |
| PA[19:16] | Non multiplexed address bus, tri-stated if BGNTn = high (if BGNTn used).   | 5<br>6<br>7<br>8  | 10 K $\Omega$ to VDD<br>10 K $\Omega$ to VDD<br>10 K $\Omega$ to VDD<br>10 K $\Omega$ to VDD   |
| PAD[15:0] | Multiplexed address bus, tri-stated outside external private memory access cycles.   | 9<br>10<br>11<br>12<br>13<br>14<br>15<br>19<br>24<br>25<br>26<br>31<br>32<br>33<br>34<br>35 | 10 K $\Omega$ to VDD<br>10 K $\Omega$ to VDD<br>10 K $\Omega$ to VDD<br>10 K $\Omega$ to VDD<br>10 K $\Omega$ to VDD<br>10 K $\Omega$ to VDD<br>10 K $\Omega$ to VDD<br>10 K $\Omega$ to VDD<br>10 K $\Omega$ to VDD<br>10 K $\Omega$ to VDD<br>10 K $\Omega$ to VDD<br>10 K $\Omega$ to VDD<br>10 K $\Omega$ to VDD<br>10 K $\Omega$ to VDD<br>10 K $\Omega$ to VDD |
| BGNTn     | Bus Grant for memory access.   | 23  | 1 K $\Omega$ or direct to VSS  |
| CTS       | Clear To Send.   | 40  | 1 K $\Omega$ or direct to VDD  |
| EXTCK     | External test clock selection.   | 51  | 1 K $\Omega$ or direct to VSS  |
| Reserved  | DSn in the first generation  | 57  | connect to CSn or VDD or VSS   |
| UDAT[7:0] | User data bus, tri-stated outside user access.   | 65<br>64<br>63<br>62<br>61<br>60<br>59<br>58  | 10 K $\Omega$ to VDD<br>10 K $\Omega$ to VDD<br>10 K $\Omega$ to VDD<br>10 K $\Omega$ to VDD<br>10 K $\Omega$ to VDD<br>10 K $\Omega$ to VDD<br>10 K $\Omega$ to VDD<br>10 K $\Omega$ to VDD   |
| DTACKn    | User access data acknowledge, tri-stated when non active.  | 73  | 1K $\Omega$ to VDD   |
| TSTn[2:0] | Test control signals.<br>Placing TSTn[1] at low level externally forces all outputs and I/Os tri-stated.<br>This can be used for board testing purposes. | 89<br>86<br>85  | 1K $\Omega$ or direct to VDD<br>1K $\Omega$ to VDD<br>1K $\Omega$ or direct to VDD   |
| Reserved  | TXER2 in the first generation  | 42  | Direct to VSS  |

**Table 7.2 - Value of the external pulling resistors - MQFP100 package**

